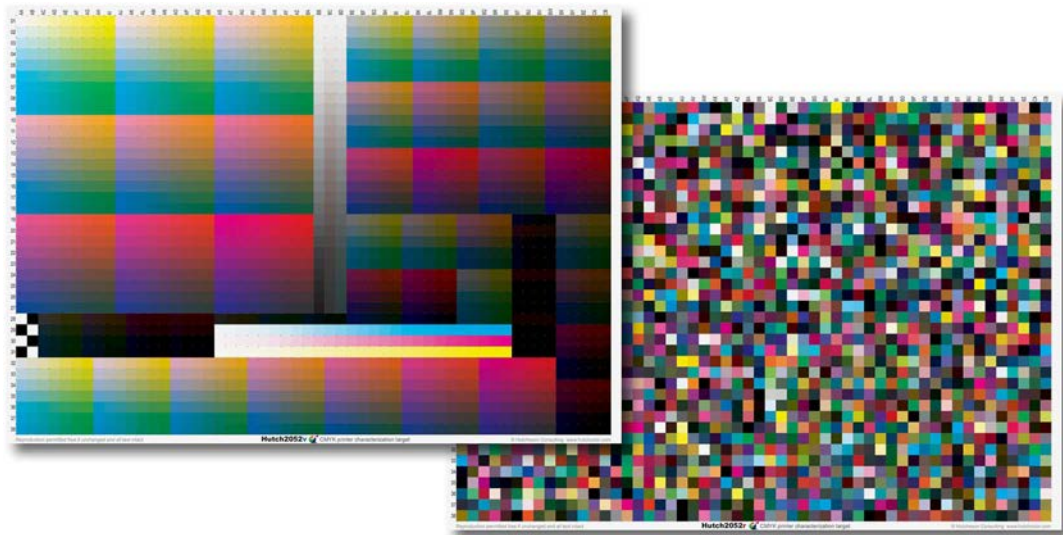


# HC2052

## High Fidelity CMYK Characterization Target



## DESIGN LOGIC & USER GUIDE



Version 19: July 2013

Copyright © HutchColor, LLC. All rights reserved.

# C O N T E N T S

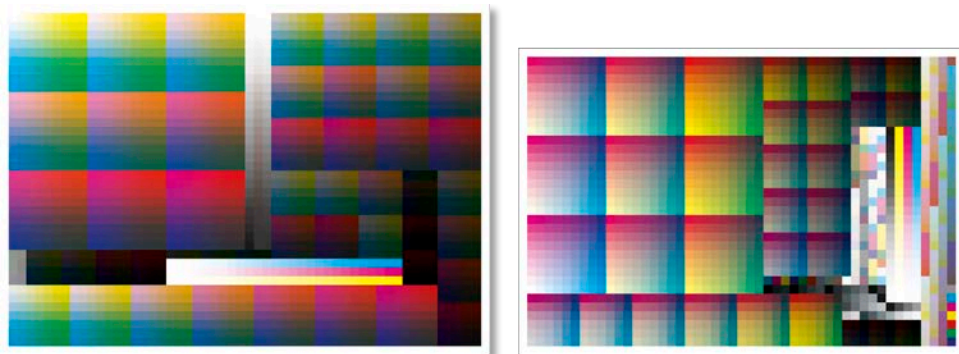
Introduction.....	3
Beta User Feedback .....	4
Theoretical Benefits (Compared to IT8.7/4).....	4
Theoretical Limitations .....	4
Goals and Design Logic.....	4
HC2052 Versions.....	5
Target Value Generation.....	5
Black Percentage Values.....	5
Patch Value Generation .....	6
Nominal HC2052F Patch Distribution.....	7
Additional 170 Patches .....	8
Available Target Images .....	8
User-Created Targets .....	8
Beta status .....	8
Reference file accuracy.....	9
Compatible software .....	9
Availability and Support.....	9
Copyright, IP and Public Adoption.....	9
Patch ID system .....	9
Appendix A: Extra 170 patch values .....	10
Single Color (CMYK) and Equal-CMY Ramp Values .....	10
CMY Gray-balanced Ramp .....	11
50,40,40 Gray Variations.....	11
Appendix B: HC2052F Mother Set .....	12
Appendix C: HC2052F CMYK Values .....	13

# HC2052

## CMYK Characterization Target

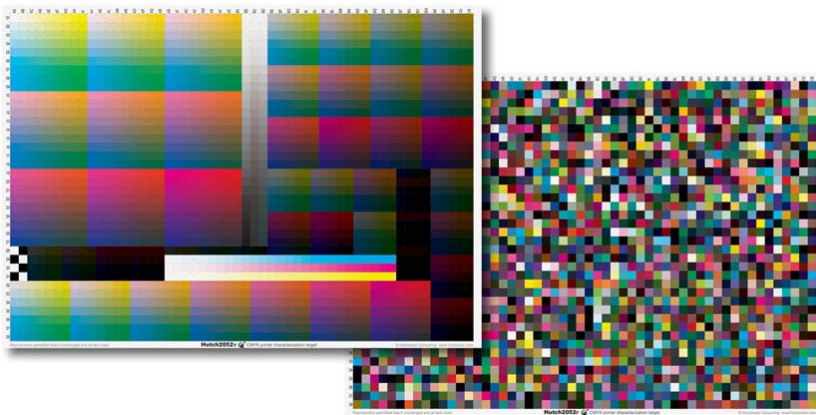
### Introduction

The HC2052 is a CMYK printer characterization target designed to improve precision and accuracy in very demanding ICC profiling applications. The main differences between the HC2052 and the legacy standard IT8.7/4 target are more patches (the HC2052 is slightly larger) and better shadow characterization (the HC2052 is noticeably darker overall).



### *HC2052 vs. IT8.7/4 showing differences in size and average darkness*

The default HC2052 target is extracted from a larger “mother-set” of patches from which additional companion targets can also be printed (if needed) to increase precision in shadows, highlights or the whole color space. In the context of the mother-set, the default HC2052 is a minimalist target, optimized for general use.



### *Default HC2052 target layouts – visual (left) and randomized (right)*

## Beta User Feedback

Beta users consistently report improved shadow detail and smaller average and peak Delta E errors (especially in saturated colors) when the HC2052 is used instead of the IT8.7/4 to characterize a wide-gamut or high dynamic range proofing device, and the proofer is then used to simulate GRACoL or SWOP.

## Theoretical Benefits (Compared to IT8.7/4)

- Closer spacing of high percentage values improves characterization of dark, saturated colors.
- More black ink levels (7 vs. 5) improves characterization of complex 4-color overprints.
- Floating point vs. integer percentages improve highlight and gray balance patches.
- Non-equal, function-based values increase end-point precision while minimizing target size and reducing risk of interpolation errors.
- Extensible with companion targets from a larger master patch set.

## Theoretical Limitations

- Slightly larger than the current IT8.7/4 (2052 vs 1617 patches).
- Does not contain all the legacy IT8.7/3 or IT8.7/4 patch values.
- Fractional (non-integer) percentage values may challenge older profiling software.

## Goals and Design Logic

- The HC2052 overcomes the IT8.7/4's sampling limitations in darker tones and saturated colors when used on high dynamic-range, wide-gamut printing systems.
- Rather than expand the IT8.7/4 target patch set, the HC2052 design takes the more spatially-efficient approach of a completely new design.
- To facilitate calibration (near-neutral or TVI) and characterization from a single target, and to improve near-neutral characterization, precision sales of TR015-based gray triplets as well as high-precision single-ink scales are included.
- Tone values are non-uniformly distributed to improve sampling frequency in darker or high percentage regions while minimizing the total number of patches.
- Patch values are distributed smoothly using an open function that allows profiling software to accurately interpolate between actual printed patches.
- All CMYK percentages are calculated with floating point precision to eliminate unnecessary limitations at the design stage. Rounded values with as few as two decimal places should produce excellent results in practice.
- The relatively wider spacing between light-tone patches than dark-tone patches assumes the target will be printed after a prior calibration step that "linearizes" performance in lighter tones. Without pre-calibration the optimality of this (or any other) minimalist characterization target may be reduced.
- The default 1-page target is part of a much larger "mother set" of patches calculated by identical functions. To improve characterization accuracy in specific tonal areas

(for example highlights or shadows) one or more companion targets from the mother set can be printed as well as the default target.

## HC2052 Versions

The last letter in the target name, (HC2052D, HC2052E, HC2052F, etc.) indicates a unique change in patch values and/or distribution curves. *At the time of writing the latest version is the HC2052F.*

*NOTE: The reference file used to measure the HC2052 **MUST** match the letter code of the printed target.*

## Target Value Generation

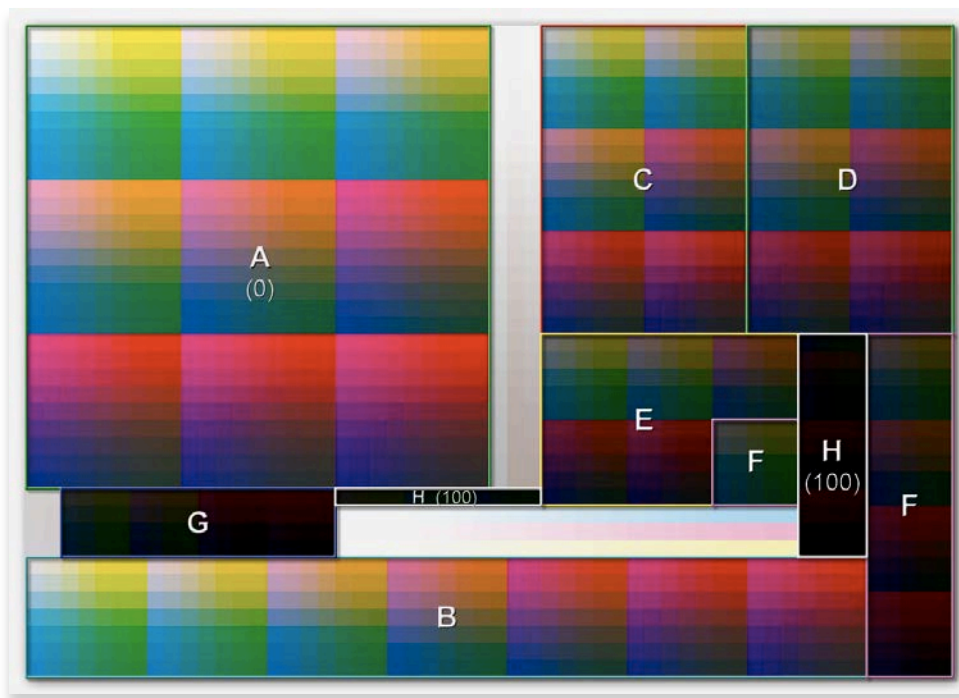
The HC2052F consists of a conventional 4-dimensional characterization array (nominally 1,882 patches) generated in Microsoft Excel by a non-proprietary algorithm, plus 170 pre-defined patches unaffected by the generation algorithm.

The 4-dimensional array can be adjusted to modify...

- The number of black values
- The number of CMY values at each black value
- The non-linear distribution of black values between 0% and 100%
- The non-linear distribution of CMY values at each black value

## Black Percentage Values

The default HC2052F has 8 black percentage levels including 0 and 100%.



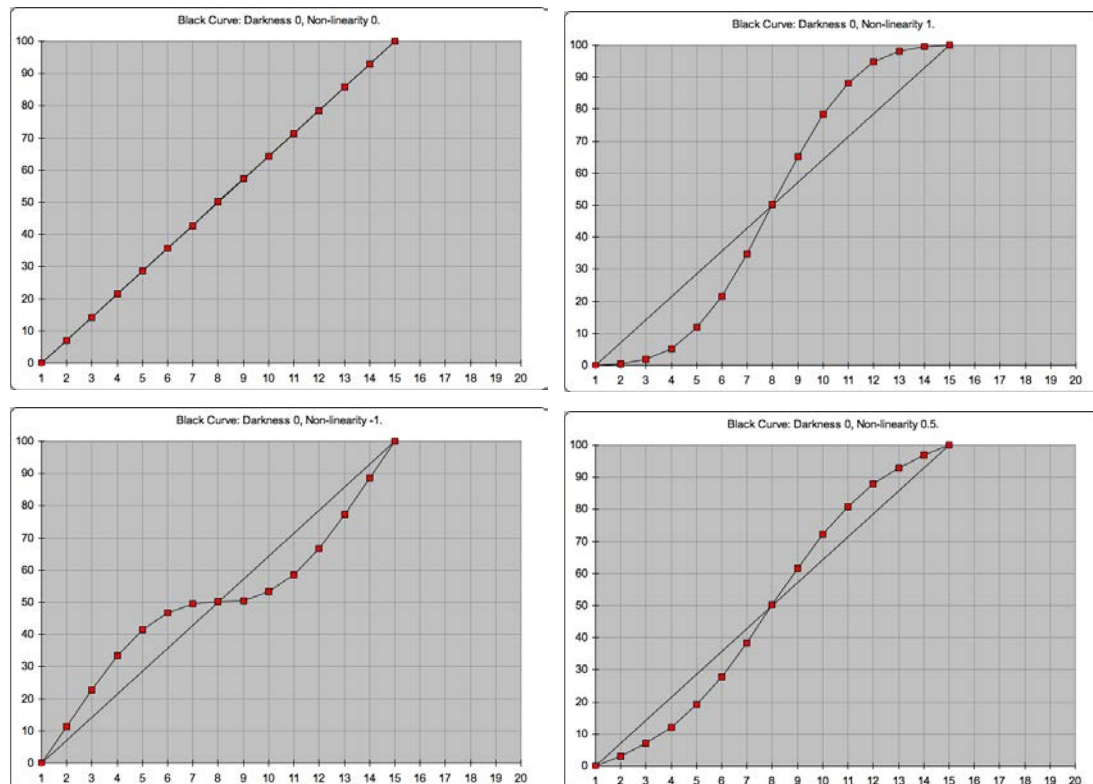
### *Black percentage value regions in the default HC2052 visual layout*

## Patch Value Generation

The distribution of Black values throughout the percentage domain is controlled by two main target generation variables governing “Non-linearity” and “Darkness”. (Similar variables control the distribution of CMY values at each Black value.)

### Non-linear S-Curve Control

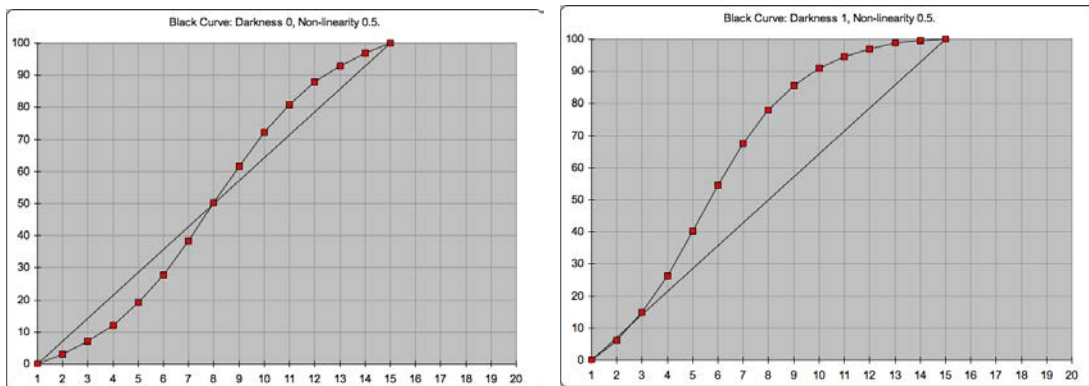
“Non-linearity” numbers between -1 and +1 adjust the percentage value spacing of both CMY and K to form either a straight line, an “S” curve or a “reverse-S” curve. A non-linearity number of 0 distributes the values with equal spacing in a straight-line graph. A number of +1.0 distributes the values on an “S” curve with closer spacing at each end, while a number of -1 distributes the values on a “reverse-S” curve with closer spacing in mid-tones.



*Non-linearity numbers of 0.0 (top left), +1.0 (top right), -1.0 (bottom left) and +0.5 (bottom right)*

### Darkness Control

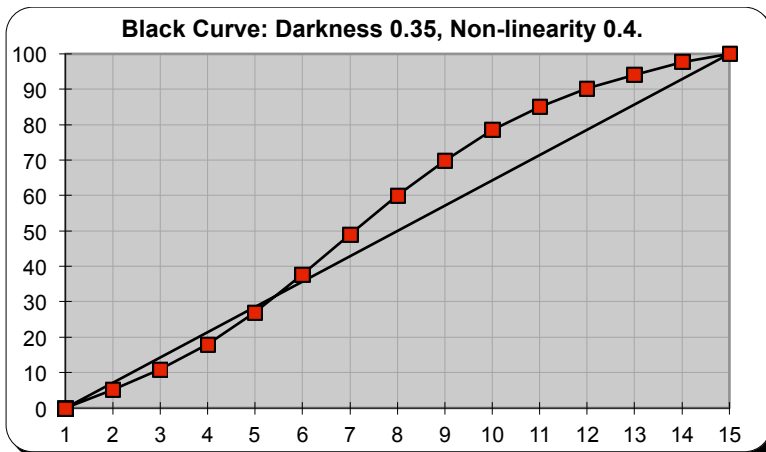
“Darkness” numbers between -1 and +1 adjust the average darkness or lightness of the patch value curves. A darkness of 0 distributes the S-curve values equally above and below a 50% average (below left), +1.0 darkens most of the S-curve values (below right), and -1.0 lightens most of the S-curve values (not shown).



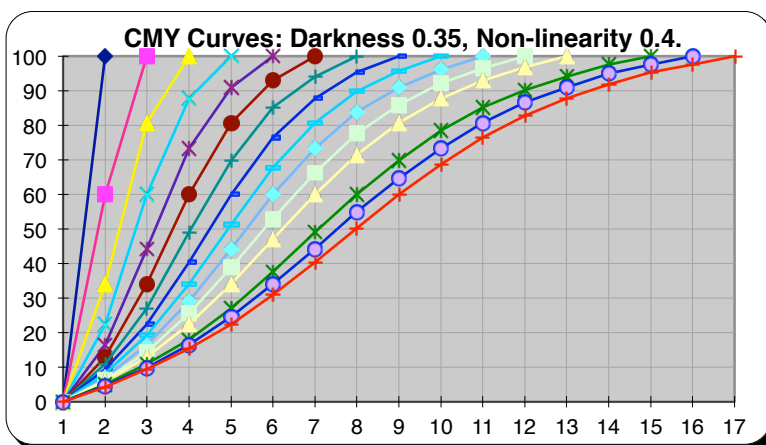
*15-level black curve darkness 0.0 (left) and 1.0 (right) with non-linearity 0.5*

## Nominal HC2052F Patch Distribution

For the HC2052F target, Non-linearity is 0.4 and Darkness is 0.35 for K and CMY.



*Black curve shape in the HC2052F. (Not all levels are used.)*



*CMY curve shapes in the HC2052F. (Not all levels or curves are used.)*

The actual values in the HC2052F 4-D array are listed below.

K %	CMY steps per K step						
	0	10.98039	27.05882	49.01961	69.80392	85.09804	100
1	0.00	0.00	0.00	0.00	0.00	0.00	0.00
2	9.41	12.94	16.47	16.47	22.35	22.35	34.12
3	22.35	34.12	44.31	44.31	60.00	60.00	80.78
4	40.39	60.00	73.33	73.33	87.84	87.84	100.00
5	60.00	80.78	90.98	90.98	100.00	100.00	
6	76.47	92.94	100.00	100.00			
7	87.84	100.00					
8	95.29						
9	100.00						

*CMY percentage values for each K percentage in the HC2052F.*

Note: these values are extracted from a larger *Mother Set* shown in **Appendix B:**

## Additional 170 Patches

The 170 extra patch values in the default HC2052 target are listed in **Appendix A:** and consist of:

- Four 27-step ramps (0-100%) of C, M, Y and K
- One 3-color gray-balanced CMY ramp (0-300%)
- One 3-color equal CMY (C=M=Y) ramp (0-300%)
- Eight close-spaced variations of a nominal 50c, 40m, 40y gray patch

## Available Target Images

A beta package of target images, reference files and a user guide can be down-loaded from [www.hutchcolor.com/Images\\_and\\_targets.html](http://www.hutchcolor.com/Images_and_targets.html).

The package contains a selection of target images for X-Rite's iSis, DTP70 and i1iO.

Reference files are available for X-Rite's MeasureTool, ColorPort and i1Profiler.

## User-Created Targets

Target images based on other layouts or devices may be generated in software such as X-Rite's MeasureTool and i1Profiler (version 1.5 or later). Earlier versions of i1Profiler and all versions of ColorPort should not be used due to a known bug that generates incorrect target patches from fractional percentages values.

## Beta status

Any and all versions of the HC2052 target should be considered "in beta" and will probably remain so indefinitely or until such time as a particular version is adopted at some industry standards level.

## Reference file accuracy

Note that percentage values are fractional (non-integer) and must be rounded to at least two decimal places, NOT truncated. Targets created from integer percentages (rounded or truncated) are “illegal”, defeat much of the value of the HC2052, and will produce inferior results compared to a “legal” HC2052.

## Compatible software

At the time of writing the only profiling software tested successfully with the HC2052 are X-Rite ProfileMaker 5x and i1Profiler. Profiling software that cannot accept fractional percentages (e.g. MonacoPROFILER) will not work correctly.

## Availability and Support

For several years the HC2052 target has been available free for public use at ... [www.hutchcolor.com/Images\\_and\\_targets.html](http://www.hutchcolor.com/Images_and_targets.html). The free status may be discontinued at any time without prior notice.

HutchColor, LLC offers NO SUPPORT to end-users unless they are HutchColor, LLC clients in good standing.

## Copyright, IP and Public Adoption

Until further notice the HC2052 target patch values and layout(s) and the principles by which they are calculated are the exclusive intellectual property and copyright © of HutchColor, LLC, with all rights reserved. HutchColor is, in principle, willing to cede all copyrights and IP free of charge to CGATS or some other standards body to make this an official standard target, subject to further discussion.

## Patch ID system

As currently available, reference files for the HC2052 may have different Sample ID and Sample Naming conventions depending on the device for which the reference file is formatted and the layout (Random or Visual).

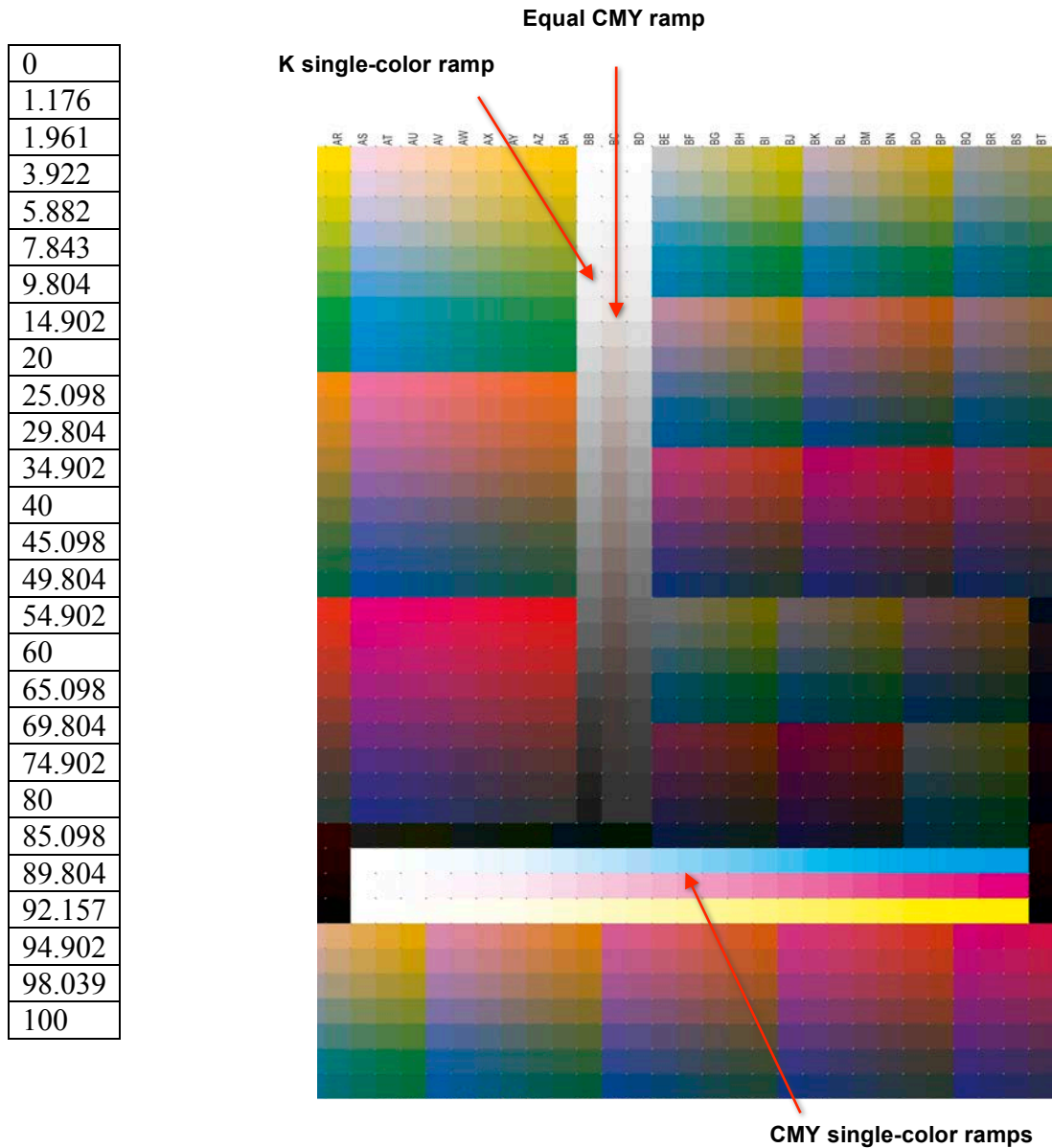
Patches are identifiable uniquely only by their CMYK percentage values, not by the Sample ID or Sample Name in the reference files. Supporting software MUST take patch percentage values from the measurement file and should not rely on any layout assumptions.

If adopted by CGATS or another official body, a patch ID system may be added, but it is strongly suggested that any arbitrary patch ID system either be based on numeric CMYK percentage values, or be *subordinate to* patch value identification.

## Appendix A: Extra 170 patch values

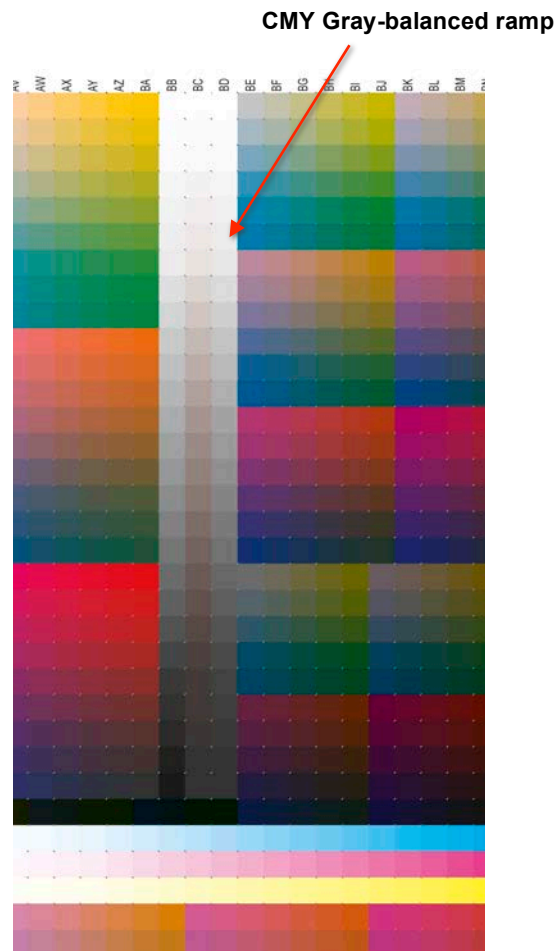
### Single Color (CMYK) and Equal-CMY Ramp Values

(Same percentage values for all colors)



## CMY Gray-balanced Ramp

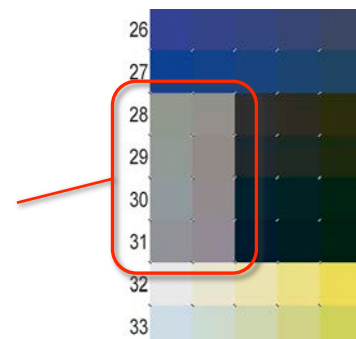
0	0	0
1.176	0.784	0.784
1.961	1.176	1.176
3.922	2.745	2.745
5.882	4.314	4.314
7.843	5.49	5.49
9.804	7.059	7.059
14.902	10.98	10.98
20	14.902	14.902
25.098	18.824	18.824
29.804	22.745	22.745
34.902	27.059	27.059
40	31.373	31.373
45.098	35.686	35.686
49.804	40	40
54.902	45.098	45.098
60	50.196	50.196
65.098	55.294	55.294
69.804	60.392	60.392
74.902	65.882	65.882
80	71.765	71.765
85.098	78.039	78.039
89.804	84.314	84.314
92.157	87.843	87.843
94.902	92.157	92.157
98.039	96.863	96.863
100	100	100



## 50,40,40 Gray Variations

49.804	34.902	34.902
49.804	34.902	40
49.804	34.902	45.098
49.804	40	34.902
49.804	40	45.098
49.804	45.098	34.902
49.804	45.098	40
49.804	45.098	45.098

50, 40, 40 Gray Variations



## Appendix B: HC2052F Mother Set

The following table shows the K values and CMY values (per K value) in the 20,684 *Mother Set* of patch values from which the default 1-page HC2052F target values (red) are drawn.

*Note: Two decimal places are shown, but the actual Mother Set is calculated in full floating-point accuracy.*

CMY steps per K															
K %	0	5.098	10.980	18.039	27.059	37.647	49.019	60	69.804	78.432	85.098	90.196	94.118	97.647	100
1	0.00	0.00	0.00	0.00	0.00	0.00	0.00	0.00	0.00	0.00	0.00	0.00	0.00	0.00	0.00
2	4.31	5.10	5.88	5.88	7.06	7.06	7.06	9.41	9.41	9.41	9.41	12.94	12.94	12.94	34.12
3	9.41	10.98	12.94	12.94	16.47	16.47	16.47	22.35	22.35	22.35	22.35	34.12	34.12	34.12	80.78
4	15.29	18.04	22.35	22.35	29.02	29.02	29.02	40.39	40.39	40.39	40.39	60.00	60.00	60.00	100.00
5	22.35	27.06	34.12	34.12	44.31	44.31	44.31	60.00	60.00	60.00	60.00	80.78	80.78	80.78	
6	30.98	37.65	47.06	47.06	60.00	60.00	60.00	76.47	76.47	76.47	76.47	92.94	92.94	92.94	
7	40.39	49.02	60.00	60.00	73.33	73.33	73.33	87.84	87.84	87.84	87.84	100.00	100.00	100.00	
8	50.20	60.00	71.37	71.37	83.92	83.92	83.92	95.29	95.29	95.29	95.29				
9	60.00	69.80	80.78	80.78	90.98	90.98	90.98	100.00	100.00	100.00	100.00				
10	68.63	78.43	87.84	87.84	96.08	96.08	96.08								
11	76.47	85.10	92.94	92.94	100.00	100.00	100.00								
12	82.75	90.20	96.86	96.86											
13	87.84	94.12	100.00	100.00											
14	91.76	97.65													
15	95.29	100.00													
16	97.65														
17	100.00														

*The 20,684 patches in the Mother Set are based on the above CMY vs. K table*

Note that all patch values in the default 1-page target (shown in red above) are symmetrically extracted from the Mother Set. Other target pages can be extracted without repetition and with full mathematical continuity.

K %	CMY steps per K step							
	0	10.98039	27.05882	49.01961	69.80392	85.09804	94.11765	100
1	0.00	0.00	0.00	0.00	0.00	0.00	0.00	0.00
2	9.41	12.94	16.47	16.47	22.35	22.35	34.12	34.12
3	22.35	34.12	44.31	44.31	60.00	60.00	80.78	80.78
4	40.39	60.00	73.33	73.33	87.84	87.84	100.00	100.00
5	60.00	80.78	90.98	90.98	100.00	100.00		
6	76.47	92.94	100.00	100.00				
7	87.84	100.00						
8	95.29							
9	100.00							

*The 1,882 patch values extracted from the Mother Set for the HC2052F target. An additional 170 patches (not shown) are also used.*

## Appendix C: HC2052F CMYK Values

The following table shows the CMYK percentage values in the HC2052F target to seven decimal places. *Although arbitrary Patch #s are shown, there is currently no official patch ID system.*

Patch #	C	M	Y	K
1	0	0	0	0
2	9.4117647	0	0	0
3	22.3529412	0	0	0
4	40.3921569	0	0	0
5	60	0	0	0
6	76.4705882	0	0	0
7	87.8431373	0	0	0
8	95.2941176	0	0	0
9	100	0	0	0
10	0	40.3921569	0	0
11	9.4117647	40.3921569	0	0
12	22.3529412	40.3921569	0	0
13	40.3921569	40.3921569	0	0
14	60	40.3921569	0	0
15	76.4705882	40.3921569	0	0
16	87.8431373	40.3921569	0	0
17	95.2941176	40.3921569	0	0
18	100	40.3921569	0	0
19	0	87.8431373	0	0
20	9.4117647	87.8431373	0	0
21	22.3529412	87.8431373	0	0
22	40.3921569	87.8431373	0	0
23	60	87.8431373	0	0
24	76.4705882	87.8431373	0	0
25	87.8431373	87.8431373	0	0
26	95.2941176	87.8431373	0	0
27	100	87.8431373	0	0
28	49.8039216	34.9019608	45.0980392	0
29	49.8039216	34.9019608	40	0
30	49.8039216	34.9019608	34.9019608	0
31	49.8039216	40	34.9019608	0
32	0	0	0	10.9803922
33	12.9411765	0	0	10.9803922
34	34.1176471	0	0	10.9803922
35	60	0	0	10.9803922
36	80.7843137	0	0	10.9803922
37	92.9411765	0	0	10.9803922
38	100	0	0	10.9803922
39	0	0	9.4117647	0
40	9.4117647	0	9.4117647	0
41	22.3529412	0	9.4117647	0
42	40.3921569	0	9.4117647	0
43	60	0	9.4117647	0
44	76.4705882	0	9.4117647	0
45	87.8431373	0	9.4117647	0
46	95.2941176	0	9.4117647	0
47	100	0	9.4117647	0

48	0	40.3921569	9.4117647	0
49	9.4117647	40.3921569	9.4117647	0
50	22.3529412	40.3921569	9.4117647	0
51	40.3921569	40.3921569	9.4117647	0
52	60	40.3921569	9.4117647	0
53	76.4705882	40.3921569	9.4117647	0
54	87.8431373	40.3921569	9.4117647	0
55	95.2941176	40.3921569	9.4117647	0
56	100	40.3921569	9.4117647	0
57	0	87.8431373	9.4117647	0
58	9.4117647	87.8431373	9.4117647	0
59	22.3529412	87.8431373	9.4117647	0
60	40.3921569	87.8431373	9.4117647	0
61	60	87.8431373	9.4117647	0
62	76.4705882	87.8431373	9.4117647	0
63	87.8431373	87.8431373	9.4117647	0
64	95.2941176	87.8431373	9.4117647	0
65	100	87.8431373	9.4117647	0
66	49.8039216	40	45.0980392	0
67	49.8039216	45.0980392	45.0980392	0
68	49.8039216	45.0980392	40	0
69	49.8039216	45.0980392	34.9019608	0
70	0	0	12.9411765	10.9803922
71	12.9411765	0	12.9411765	10.9803922
72	34.1176471	0	12.9411765	10.9803922
73	60	0	12.9411765	10.9803922
74	80.7843137	0	12.9411765	10.9803922
75	92.9411765	0	12.9411765	10.9803922
76	100	0	12.9411765	10.9803922
77	0	0	22.3529412	0
78	9.4117647	0	22.3529412	0
79	22.3529412	0	22.3529412	0
80	40.3921569	0	22.3529412	0
81	60	0	22.3529412	0
82	76.4705882	0	22.3529412	0
83	87.8431373	0	22.3529412	0
84	95.2941176	0	22.3529412	0
85	100	0	22.3529412	0
86	0	40.3921569	22.3529412	0
87	9.4117647	40.3921569	22.3529412	0
88	22.3529412	40.3921569	22.3529412	0
89	40.3921569	40.3921569	22.3529412	0
90	60	40.3921569	22.3529412	0
91	76.4705882	40.3921569	22.3529412	0
92	87.8431373	40.3921569	22.3529412	0
93	95.2941176	40.3921569	22.3529412	0
94	100	40.3921569	22.3529412	0
95	0	87.8431373	22.3529412	0
96	9.4117647	87.8431373	22.3529412	0
97	22.3529412	87.8431373	22.3529412	0
98	40.3921569	87.8431373	22.3529412	0
99	60	87.8431373	22.3529412	0
100	76.4705882	87.8431373	22.3529412	0
101	87.8431373	87.8431373	22.3529412	0

102	95.2941176	87.8431373	22.3529412	0
103	100	87.8431373	22.3529412	0
104	0	0	0	94.1176471
105	34.1176471	0	0	94.1176471
106	80.7843137	0	0	94.1176471
107	100	0	0	94.1176471
108	0	0	34.1176471	10.9803922
109	12.9411765	0	34.1176471	10.9803922
110	34.1176471	0	34.1176471	10.9803922
111	60	0	34.1176471	10.9803922
112	80.7843137	0	34.1176471	10.9803922
113	92.9411765	0	34.1176471	10.9803922
114	100	0	34.1176471	10.9803922
115	0	0	40.3921569	0
116	9.4117647	0	40.3921569	0
117	22.3529412	0	40.3921569	0
118	40.3921569	0	40.3921569	0
119	60	0	40.3921569	0
120	76.4705882	0	40.3921569	0
121	87.8431373	0	40.3921569	0
122	95.2941176	0	40.3921569	0
123	100	0	40.3921569	0
124	0	40.3921569	40.3921569	0
125	9.4117647	40.3921569	40.3921569	0
126	22.3529412	40.3921569	40.3921569	0
127	40.3921569	40.3921569	40.3921569	0
128	60	40.3921569	40.3921569	0
129	76.4705882	40.3921569	40.3921569	0
130	87.8431373	40.3921569	40.3921569	0
131	95.2941176	40.3921569	40.3921569	0
132	100	40.3921569	40.3921569	0
133	0	87.8431373	40.3921569	0
134	9.4117647	87.8431373	40.3921569	0
135	22.3529412	87.8431373	40.3921569	0
136	40.3921569	87.8431373	40.3921569	0
137	60	87.8431373	40.3921569	0
138	76.4705882	87.8431373	40.3921569	0
139	87.8431373	87.8431373	40.3921569	0
140	95.2941176	87.8431373	40.3921569	0
141	100	87.8431373	40.3921569	0
142	0	0	34.1176471	94.1176471
143	34.1176471	0	34.1176471	94.1176471
144	80.7843137	0	34.1176471	94.1176471
145	100	0	34.1176471	94.1176471
146	0	0	60	10.9803922
147	12.9411765	0	60	10.9803922
148	34.1176471	0	60	10.9803922
149	60	0	60	10.9803922
150	80.7843137	0	60	10.9803922
151	92.9411765	0	60	10.9803922
152	100	0	60	10.9803922
153	0	0	60	0
154	9.4117647	0	60	0
155	22.3529412	0	60	0

156	40.3921569	0	60	0
157	60	0	60	0
158	76.4705882	0	60	0
159	87.8431373	0	60	0
160	95.2941176	0	60	0
161	100	0	60	0
162	0	40.3921569	60	0
163	9.4117647	40.3921569	60	0
164	22.3529412	40.3921569	60	0
165	40.3921569	40.3921569	60	0
166	60	40.3921569	60	0
167	76.4705882	40.3921569	60	0
168	87.8431373	40.3921569	60	0
169	95.2941176	40.3921569	60	0
170	100	40.3921569	60	0
171	0	87.8431373	60	0
172	9.4117647	87.8431373	60	0
173	22.3529412	87.8431373	60	0
174	40.3921569	87.8431373	60	0
175	60	87.8431373	60	0
176	76.4705882	87.8431373	60	0
177	87.8431373	87.8431373	60	0
178	95.2941176	87.8431373	60	0
179	100	87.8431373	60	0
180	0	0	80.7843137	94.1176471
181	34.1176471	0	80.7843137	94.1176471
182	80.7843137	0	80.7843137	94.1176471
183	100	0	80.7843137	94.1176471
184	0	0	80.7843137	10.9803922
185	12.9411765	0	80.7843137	10.9803922
186	34.1176471	0	80.7843137	10.9803922
187	60	0	80.7843137	10.9803922
188	80.7843137	0	80.7843137	10.9803922
189	92.9411765	0	80.7843137	10.9803922
190	100	0	80.7843137	10.9803922
191	0	0	76.4705882	0
192	9.4117647	0	76.4705882	0
193	22.3529412	0	76.4705882	0
194	40.3921569	0	76.4705882	0
195	60	0	76.4705882	0
196	76.4705882	0	76.4705882	0
197	87.8431373	0	76.4705882	0
198	95.2941176	0	76.4705882	0
199	100	0	76.4705882	0
200	0	40.3921569	76.4705882	0
201	9.4117647	40.3921569	76.4705882	0
202	22.3529412	40.3921569	76.4705882	0
203	40.3921569	40.3921569	76.4705882	0
204	60	40.3921569	76.4705882	0
205	76.4705882	40.3921569	76.4705882	0
206	87.8431373	40.3921569	76.4705882	0
207	95.2941176	40.3921569	76.4705882	0
208	100	40.3921569	76.4705882	0
209	0	87.8431373	76.4705882	0

210	9.4117647	87.8431373	76.4705882	0
211	22.3529412	87.8431373	76.4705882	0
212	40.3921569	87.8431373	76.4705882	0
213	60	87.8431373	76.4705882	0
214	76.4705882	87.8431373	76.4705882	0
215	87.8431373	87.8431373	76.4705882	0
216	95.2941176	87.8431373	76.4705882	0
217	100	87.8431373	76.4705882	0
218	0	0	100	94.1176471
219	34.1176471	0	100	94.1176471
220	80.7843137	0	100	94.1176471
221	100	0	100	94.1176471
222	0	0	92.9411765	10.9803922
223	12.9411765	0	92.9411765	10.9803922
224	34.1176471	0	92.9411765	10.9803922
225	60	0	92.9411765	10.9803922
226	80.7843137	0	92.9411765	10.9803922
227	92.9411765	0	92.9411765	10.9803922
228	100	0	92.9411765	10.9803922
229	0	0	87.8431373	0
230	9.4117647	0	87.8431373	0
231	22.3529412	0	87.8431373	0
232	40.3921569	0	87.8431373	0
233	60	0	87.8431373	0
234	76.4705882	0	87.8431373	0
235	87.8431373	0	87.8431373	0
236	95.2941176	0	87.8431373	0
237	100	0	87.8431373	0
238	0	40.3921569	87.8431373	0
239	9.4117647	40.3921569	87.8431373	0
240	22.3529412	40.3921569	87.8431373	0
241	40.3921569	40.3921569	87.8431373	0
242	60	40.3921569	87.8431373	0
243	76.4705882	40.3921569	87.8431373	0
244	87.8431373	40.3921569	87.8431373	0
245	95.2941176	40.3921569	87.8431373	0
246	100	40.3921569	87.8431373	0
247	0	87.8431373	87.8431373	0
248	9.4117647	87.8431373	87.8431373	0
249	22.3529412	87.8431373	87.8431373	0
250	40.3921569	87.8431373	87.8431373	0
251	60	87.8431373	87.8431373	0
252	76.4705882	87.8431373	87.8431373	0
253	87.8431373	87.8431373	87.8431373	0
254	95.2941176	87.8431373	87.8431373	0
255	100	87.8431373	87.8431373	0
256	0	34.1176471	0	94.1176471
257	34.1176471	34.1176471	0	94.1176471
258	80.7843137	34.1176471	0	94.1176471
259	100	34.1176471	0	94.1176471
260	0	0	100	10.9803922
261	12.9411765	0	100	10.9803922
262	34.1176471	0	100	10.9803922
263	60	0	100	10.9803922

264	80.7843137	0	100	10.9803922
265	92.9411765	0	100	10.9803922
266	100	0	100	10.9803922
267	0	0	95.2941176	0
268	9.4117647	0	95.2941176	0
269	22.3529412	0	95.2941176	0
270	40.3921569	0	95.2941176	0
271	60	0	95.2941176	0
272	76.4705882	0	95.2941176	0
273	87.8431373	0	95.2941176	0
274	95.2941176	0	95.2941176	0
275	100	0	95.2941176	0
276	0	40.3921569	95.2941176	0
277	9.4117647	40.3921569	95.2941176	0
278	22.3529412	40.3921569	95.2941176	0
279	40.3921569	40.3921569	95.2941176	0
280	60	40.3921569	95.2941176	0
281	76.4705882	40.3921569	95.2941176	0
282	87.8431373	40.3921569	95.2941176	0
283	95.2941176	40.3921569	95.2941176	0
284	100	40.3921569	95.2941176	0
285	0	87.8431373	95.2941176	0
286	9.4117647	87.8431373	95.2941176	0
287	22.3529412	87.8431373	95.2941176	0
288	40.3921569	87.8431373	95.2941176	0
289	60	87.8431373	95.2941176	0
290	76.4705882	87.8431373	95.2941176	0
291	87.8431373	87.8431373	95.2941176	0
292	95.2941176	87.8431373	95.2941176	0
293	100	87.8431373	95.2941176	0
294	0	34.1176471	34.1176471	94.1176471
295	34.1176471	34.1176471	34.1176471	94.1176471
296	80.7843137	34.1176471	34.1176471	94.1176471
297	100	34.1176471	34.1176471	94.1176471
298	0	12.9411765	0	10.9803922
299	12.9411765	12.9411765	0	10.9803922
300	34.1176471	12.9411765	0	10.9803922
301	60	12.9411765	0	10.9803922
302	80.7843137	12.9411765	0	10.9803922
303	92.9411765	12.9411765	0	10.9803922
304	100	12.9411765	0	10.9803922
305	0	0	100	0
306	9.4117647	0	100	0
307	22.3529412	0	100	0
308	40.3921569	0	100	0
309	60	0	100	0
310	76.4705882	0	100	0
311	87.8431373	0	100	0
312	95.2941176	0	100	0
313	100	0	100	0
314	0	40.3921569	100	0
315	9.4117647	40.3921569	100	0
316	22.3529412	40.3921569	100	0
317	40.3921569	40.3921569	100	0

318	60	40.3921569	100	0
319	76.4705882	40.3921569	100	0
320	87.8431373	40.3921569	100	0
321	95.2941176	40.3921569	100	0
322	100	40.3921569	100	0
323	0	87.8431373	100	0
324	9.4117647	87.8431373	100	0
325	22.3529412	87.8431373	100	0
326	40.3921569	87.8431373	100	0
327	60	87.8431373	100	0
328	76.4705882	87.8431373	100	0
329	87.8431373	87.8431373	100	0
330	95.2941176	87.8431373	100	0
331	100	87.8431373	100	0
332	0	34.1176471	80.7843137	94.1176471
333	34.1176471	34.1176471	80.7843137	94.1176471
334	80.7843137	34.1176471	80.7843137	94.1176471
335	100	34.1176471	80.7843137	94.1176471
336	0	12.9411765	12.9411765	10.9803922
337	12.9411765	12.9411765	12.9411765	10.9803922
338	34.1176471	12.9411765	12.9411765	10.9803922
339	60	12.9411765	12.9411765	10.9803922
340	80.7843137	12.9411765	12.9411765	10.9803922
341	92.9411765	12.9411765	12.9411765	10.9803922
342	100	12.9411765	12.9411765	10.9803922
343	0	9.4117647	0	0
344	9.4117647	9.4117647	0	0
345	22.3529412	9.4117647	0	0
346	40.3921569	9.4117647	0	0
347	60	9.4117647	0	0
348	76.4705882	9.4117647	0	0
349	87.8431373	9.4117647	0	0
350	95.2941176	9.4117647	0	0
351	100	9.4117647	0	0
352	0	60	0	0
353	9.4117647	60	0	0
354	22.3529412	60	0	0
355	40.3921569	60	0	0
356	60	60	0	0
357	76.4705882	60	0	0
358	87.8431373	60	0	0
359	95.2941176	60	0	0
360	100	60	0	0
361	0	95.2941176	0	0
362	9.4117647	95.2941176	0	0
363	22.3529412	95.2941176	0	0
364	40.3921569	95.2941176	0	0
365	60	95.2941176	0	0
366	76.4705882	95.2941176	0	0
367	87.8431373	95.2941176	0	0
368	95.2941176	95.2941176	0	0
369	100	95.2941176	0	0
370	0	34.1176471	100	94.1176471
371	34.1176471	34.1176471	100	94.1176471

372	80.7843137	34.1176471	100	94.1176471
373	100	34.1176471	100	94.1176471
374	0	12.9411765	34.1176471	10.9803922
375	12.9411765	12.9411765	34.1176471	10.9803922
376	34.1176471	12.9411765	34.1176471	10.9803922
377	60	12.9411765	34.1176471	10.9803922
378	80.7843137	12.9411765	34.1176471	10.9803922
379	92.9411765	12.9411765	34.1176471	10.9803922
380	100	12.9411765	34.1176471	10.9803922
381	0	9.4117647	9.4117647	0
382	9.4117647	9.4117647	9.4117647	0
383	22.3529412	9.4117647	9.4117647	0
384	40.3921569	9.4117647	9.4117647	0
385	60	9.4117647	9.4117647	0
386	76.4705882	9.4117647	9.4117647	0
387	87.8431373	9.4117647	9.4117647	0
388	95.2941176	9.4117647	9.4117647	0
389	100	9.4117647	9.4117647	0
390	0	60	9.4117647	0
391	9.4117647	60	9.4117647	0
392	22.3529412	60	9.4117647	0
393	40.3921569	60	9.4117647	0
394	60	60	9.4117647	0
395	76.4705882	60	9.4117647	0
396	87.8431373	60	9.4117647	0
397	95.2941176	60	9.4117647	0
398	100	60	9.4117647	0
399	0	95.2941176	9.4117647	0
400	9.4117647	95.2941176	9.4117647	0
401	22.3529412	95.2941176	9.4117647	0
402	40.3921569	95.2941176	9.4117647	0
403	60	95.2941176	9.4117647	0
404	76.4705882	95.2941176	9.4117647	0
405	87.8431373	95.2941176	9.4117647	0
406	95.2941176	95.2941176	9.4117647	0
407	100	95.2941176	9.4117647	0
408	0	80.7843137	0	94.1176471
409	34.1176471	80.7843137	0	94.1176471
410	80.7843137	80.7843137	0	94.1176471
411	100	80.7843137	0	94.1176471
412	0	12.9411765	60	10.9803922
413	12.9411765	12.9411765	60	10.9803922
414	34.1176471	12.9411765	60	10.9803922
415	60	12.9411765	60	10.9803922
416	80.7843137	12.9411765	60	10.9803922
417	92.9411765	12.9411765	60	10.9803922
418	100	12.9411765	60	10.9803922
419	0	9.4117647	22.3529412	0
420	9.4117647	9.4117647	22.3529412	0
421	22.3529412	9.4117647	22.3529412	0
422	40.3921569	9.4117647	22.3529412	0
423	60	9.4117647	22.3529412	0
424	76.4705882	9.4117647	22.3529412	0
425	87.8431373	9.4117647	22.3529412	0

426	95.2941176	9.4117647	22.3529412	0
427	100	9.4117647	22.3529412	0
428	0	60	22.3529412	0
429	9.4117647	60	22.3529412	0
430	22.3529412	60	22.3529412	0
431	40.3921569	60	22.3529412	0
432	60	60	22.3529412	0
433	76.4705882	60	22.3529412	0
434	87.8431373	60	22.3529412	0
435	95.2941176	60	22.3529412	0
436	100	60	22.3529412	0
437	0	95.2941176	22.3529412	0
438	9.4117647	95.2941176	22.3529412	0
439	22.3529412	95.2941176	22.3529412	0
440	40.3921569	95.2941176	22.3529412	0
441	60	95.2941176	22.3529412	0
442	76.4705882	95.2941176	22.3529412	0
443	87.8431373	95.2941176	22.3529412	0
444	95.2941176	95.2941176	22.3529412	0
445	100	95.2941176	22.3529412	0
446	0	80.7843137	34.1176471	94.1176471
447	34.1176471	80.7843137	34.1176471	94.1176471
448	80.7843137	80.7843137	34.1176471	94.1176471
449	100	80.7843137	34.1176471	94.1176471
450	0	12.9411765	80.7843137	10.9803922
451	12.9411765	12.9411765	80.7843137	10.9803922
452	34.1176471	12.9411765	80.7843137	10.9803922
453	60	12.9411765	80.7843137	10.9803922
454	80.7843137	12.9411765	80.7843137	10.9803922
455	92.9411765	12.9411765	80.7843137	10.9803922
456	100	12.9411765	80.7843137	10.9803922
457	0	9.4117647	40.3921569	0
458	9.4117647	9.4117647	40.3921569	0
459	22.3529412	9.4117647	40.3921569	0
460	40.3921569	9.4117647	40.3921569	0
461	60	9.4117647	40.3921569	0
462	76.4705882	9.4117647	40.3921569	0
463	87.8431373	9.4117647	40.3921569	0
464	95.2941176	9.4117647	40.3921569	0
465	100	9.4117647	40.3921569	0
466	0	60	40.3921569	0
467	9.4117647	60	40.3921569	0
468	22.3529412	60	40.3921569	0
469	40.3921569	60	40.3921569	0
470	60	60	40.3921569	0
471	76.4705882	60	40.3921569	0
472	87.8431373	60	40.3921569	0
473	95.2941176	60	40.3921569	0
474	100	60	40.3921569	0
475	0	95.2941176	40.3921569	0
476	9.4117647	95.2941176	40.3921569	0
477	22.3529412	95.2941176	40.3921569	0
478	40.3921569	95.2941176	40.3921569	0
479	60	95.2941176	40.3921569	0

480	76.4705882	95.2941176	40.3921569	0
481	87.8431373	95.2941176	40.3921569	0
482	95.2941176	95.2941176	40.3921569	0
483	100	95.2941176	40.3921569	0
484	0	80.7843137	80.7843137	94.1176471
485	34.1176471	80.7843137	80.7843137	94.1176471
486	80.7843137	80.7843137	80.7843137	94.1176471
487	100	80.7843137	80.7843137	94.1176471
488	0	12.9411765	92.9411765	10.9803922
489	12.9411765	12.9411765	92.9411765	10.9803922
490	34.1176471	12.9411765	92.9411765	10.9803922
491	60	12.9411765	92.9411765	10.9803922
492	80.7843137	12.9411765	92.9411765	10.9803922
493	92.9411765	12.9411765	92.9411765	10.9803922
494	100	12.9411765	92.9411765	10.9803922
495	0	9.4117647	60	0
496	9.4117647	9.4117647	60	0
497	22.3529412	9.4117647	60	0
498	40.3921569	9.4117647	60	0
499	60	9.4117647	60	0
500	76.4705882	9.4117647	60	0
501	87.8431373	9.4117647	60	0
502	95.2941176	9.4117647	60	0
503	100	9.4117647	60	0
504	0	60	60	0
505	9.4117647	60	60	0
506	22.3529412	60	60	0
507	40.3921569	60	60	0
508	60	60	60	0
509	76.4705882	60	60	0
510	87.8431373	60	60	0
511	95.2941176	60	60	0
512	100	60	60	0
513	0	95.2941176	60	0
514	9.4117647	95.2941176	60	0
515	22.3529412	95.2941176	60	0
516	40.3921569	95.2941176	60	0
517	60	95.2941176	60	0
518	76.4705882	95.2941176	60	0
519	87.8431373	95.2941176	60	0
520	95.2941176	95.2941176	60	0
521	100	95.2941176	60	0
522	0	80.7843137	100	94.1176471
523	34.1176471	80.7843137	100	94.1176471
524	80.7843137	80.7843137	100	94.1176471
525	100	80.7843137	100	94.1176471
526	0	12.9411765	100	10.9803922
527	12.9411765	12.9411765	100	10.9803922
528	34.1176471	12.9411765	100	10.9803922
529	60	12.9411765	100	10.9803922
530	80.7843137	12.9411765	100	10.9803922
531	92.9411765	12.9411765	100	10.9803922
532	100	12.9411765	100	10.9803922
533	0	9.4117647	76.4705882	0

534	9.4117647	9.4117647	76.4705882	0
535	22.3529412	9.4117647	76.4705882	0
536	40.3921569	9.4117647	76.4705882	0
537	60	9.4117647	76.4705882	0
538	76.4705882	9.4117647	76.4705882	0
539	87.8431373	9.4117647	76.4705882	0
540	95.2941176	9.4117647	76.4705882	0
541	100	9.4117647	76.4705882	0
542	0	60	76.4705882	0
543	9.4117647	60	76.4705882	0
544	22.3529412	60	76.4705882	0
545	40.3921569	60	76.4705882	0
546	60	60	76.4705882	0
547	76.4705882	60	76.4705882	0
548	87.8431373	60	76.4705882	0
549	95.2941176	60	76.4705882	0
550	100	60	76.4705882	0
551	0	95.2941176	76.4705882	0
552	9.4117647	95.2941176	76.4705882	0
553	22.3529412	95.2941176	76.4705882	0
554	40.3921569	95.2941176	76.4705882	0
555	60	95.2941176	76.4705882	0
556	76.4705882	95.2941176	76.4705882	0
557	87.8431373	95.2941176	76.4705882	0
558	95.2941176	95.2941176	76.4705882	0
559	100	95.2941176	76.4705882	0
560	0	100	0	94.1176471
561	34.1176471	100	0	94.1176471
562	80.7843137	100	0	94.1176471
563	100	100	0	94.1176471
564	0	34.1176471	0	10.9803922
565	12.9411765	34.1176471	0	10.9803922
566	34.1176471	34.1176471	0	10.9803922
567	60	34.1176471	0	10.9803922
568	80.7843137	34.1176471	0	10.9803922
569	92.9411765	34.1176471	0	10.9803922
570	100	34.1176471	0	10.9803922
571	0	9.4117647	87.8431373	0
572	9.4117647	9.4117647	87.8431373	0
573	22.3529412	9.4117647	87.8431373	0
574	40.3921569	9.4117647	87.8431373	0
575	60	9.4117647	87.8431373	0
576	76.4705882	9.4117647	87.8431373	0
577	87.8431373	9.4117647	87.8431373	0
578	95.2941176	9.4117647	87.8431373	0
579	100	9.4117647	87.8431373	0
580	0	60	87.8431373	0
581	9.4117647	60	87.8431373	0
582	22.3529412	60	87.8431373	0
583	40.3921569	60	87.8431373	0
584	60	60	87.8431373	0
585	76.4705882	60	87.8431373	0
586	87.8431373	60	87.8431373	0
587	95.2941176	60	87.8431373	0

588	100	60	87.8431373	0
589	0	95.2941176	87.8431373	0
590	9.4117647	95.2941176	87.8431373	0
591	22.3529412	95.2941176	87.8431373	0
592	40.3921569	95.2941176	87.8431373	0
593	60	95.2941176	87.8431373	0
594	76.4705882	95.2941176	87.8431373	0
595	87.8431373	95.2941176	87.8431373	0
596	95.2941176	95.2941176	87.8431373	0
597	100	95.2941176	87.8431373	0
598	0	100	34.1176471	94.1176471
599	34.1176471	100	34.1176471	94.1176471
600	80.7843137	100	34.1176471	94.1176471
601	100	100	34.1176471	94.1176471
602	0	34.1176471	12.9411765	10.9803922
603	12.9411765	34.1176471	12.9411765	10.9803922
604	34.1176471	34.1176471	12.9411765	10.9803922
605	60	34.1176471	12.9411765	10.9803922
606	80.7843137	34.1176471	12.9411765	10.9803922
607	92.9411765	34.1176471	12.9411765	10.9803922
608	100	34.1176471	12.9411765	10.9803922
609	0	9.4117647	95.2941176	0
610	9.4117647	9.4117647	95.2941176	0
611	22.3529412	9.4117647	95.2941176	0
612	40.3921569	9.4117647	95.2941176	0
613	60	9.4117647	95.2941176	0
614	76.4705882	9.4117647	95.2941176	0
615	87.8431373	9.4117647	95.2941176	0
616	95.2941176	9.4117647	95.2941176	0
617	100	9.4117647	95.2941176	0
618	0	60	95.2941176	0
619	9.4117647	60	95.2941176	0
620	22.3529412	60	95.2941176	0
621	40.3921569	60	95.2941176	0
622	60	60	95.2941176	0
623	76.4705882	60	95.2941176	0
624	87.8431373	60	95.2941176	0
625	95.2941176	60	95.2941176	0
626	100	60	95.2941176	0
627	0	95.2941176	95.2941176	0
628	9.4117647	95.2941176	95.2941176	0
629	22.3529412	95.2941176	95.2941176	0
630	40.3921569	95.2941176	95.2941176	0
631	60	95.2941176	95.2941176	0
632	76.4705882	95.2941176	95.2941176	0
633	87.8431373	95.2941176	95.2941176	0
634	95.2941176	95.2941176	95.2941176	0
635	100	95.2941176	95.2941176	0
636	0	100	80.7843137	94.1176471
637	34.1176471	100	80.7843137	94.1176471
638	80.7843137	100	80.7843137	94.1176471
639	100	100	80.7843137	94.1176471
640	0	34.1176471	34.1176471	10.9803922
641	12.9411765	34.1176471	34.1176471	10.9803922

642	34.1176471	34.1176471	34.1176471	10.9803922
643	60	34.1176471	34.1176471	10.9803922
644	80.7843137	34.1176471	34.1176471	10.9803922
645	92.9411765	34.1176471	34.1176471	10.9803922
646	100	34.1176471	34.1176471	10.9803922
647	0	9.4117647	100	0
648	9.4117647	9.4117647	100	0
649	22.3529412	9.4117647	100	0
650	40.3921569	9.4117647	100	0
651	60	9.4117647	100	0
652	76.4705882	9.4117647	100	0
653	87.8431373	9.4117647	100	0
654	95.2941176	9.4117647	100	0
655	100	9.4117647	100	0
656	0	60	100	0
657	9.4117647	60	100	0
658	22.3529412	60	100	0
659	40.3921569	60	100	0
660	60	60	100	0
661	76.4705882	60	100	0
662	87.8431373	60	100	0
663	95.2941176	60	100	0
664	100	60	100	0
665	0	95.2941176	100	0
666	9.4117647	95.2941176	100	0
667	22.3529412	95.2941176	100	0
668	40.3921569	95.2941176	100	0
669	60	95.2941176	100	0
670	76.4705882	95.2941176	100	0
671	87.8431373	95.2941176	100	0
672	95.2941176	95.2941176	100	0
673	100	95.2941176	100	0
674	0	100	100	94.1176471
675	34.1176471	100	100	94.1176471
676	80.7843137	100	100	94.1176471
677	100	100	100	94.1176471
678	0	34.1176471	60	10.9803922
679	12.9411765	34.1176471	60	10.9803922
680	34.1176471	34.1176471	60	10.9803922
681	60	34.1176471	60	10.9803922
682	80.7843137	34.1176471	60	10.9803922
683	92.9411765	34.1176471	60	10.9803922
684	100	34.1176471	60	10.9803922
685	0	22.3529412	0	0
686	9.4117647	22.3529412	0	0
687	22.3529412	22.3529412	0	0
688	40.3921569	22.3529412	0	0
689	60	22.3529412	0	0
690	76.4705882	22.3529412	0	0
691	87.8431373	22.3529412	0	0
692	95.2941176	22.3529412	0	0
693	100	22.3529412	0	0
694	0	76.4705882	0	0
695	9.4117647	76.4705882	0	0

696	22.3529412	76.4705882	0	0
697	40.3921569	76.4705882	0	0
698	60	76.4705882	0	0
699	76.4705882	76.4705882	0	0
700	87.8431373	76.4705882	0	0
701	95.2941176	76.4705882	0	0
702	100	76.4705882	0	0
703	0	100	0	0
704	9.4117647	100	0	0
705	22.3529412	100	0	0
706	40.3921569	100	0	0
707	60	100	0	0
708	76.4705882	100	0	0
709	87.8431373	100	0	0
710	95.2941176	100	0	0
711	100	100	0	0
712	0	0	0	100
713	0	0	0	0
714	0	0	0	0
715	0	0	0	0
716	0	34.1176471	80.7843137	10.9803922
717	12.9411765	34.1176471	80.7843137	10.9803922
718	34.1176471	34.1176471	80.7843137	10.9803922
719	60	34.1176471	80.7843137	10.9803922
720	80.7843137	34.1176471	80.7843137	10.9803922
721	92.9411765	34.1176471	80.7843137	10.9803922
722	100	34.1176471	80.7843137	10.9803922
723	0	22.3529412	9.4117647	0
724	9.4117647	22.3529412	9.4117647	0
725	22.3529412	22.3529412	9.4117647	0
726	40.3921569	22.3529412	9.4117647	0
727	60	22.3529412	9.4117647	0
728	76.4705882	22.3529412	9.4117647	0
729	87.8431373	22.3529412	9.4117647	0
730	95.2941176	22.3529412	9.4117647	0
731	100	22.3529412	9.4117647	0
732	0	76.4705882	9.4117647	0
733	9.4117647	76.4705882	9.4117647	0
734	22.3529412	76.4705882	9.4117647	0
735	40.3921569	76.4705882	9.4117647	0
736	60	76.4705882	9.4117647	0
737	76.4705882	76.4705882	9.4117647	0
738	87.8431373	76.4705882	9.4117647	0
739	95.2941176	76.4705882	9.4117647	0
740	100	76.4705882	9.4117647	0
741	0	100	9.4117647	0
742	9.4117647	100	9.4117647	0
743	22.3529412	100	9.4117647	0
744	40.3921569	100	9.4117647	0
745	60	100	9.4117647	0
746	76.4705882	100	9.4117647	0
747	87.8431373	100	9.4117647	0
748	95.2941176	100	9.4117647	0
749	100	100	9.4117647	0

750	0	0	34.1176471	100
751	1.1764706	0	0	0
752	0	1.1764706	0	0
753	0	0	1.1764706	0
754	0	34.1176471	92.9411765	10.9803922
755	12.9411765	34.1176471	92.9411765	10.9803922
756	34.1176471	34.1176471	92.9411765	10.9803922
757	60	34.1176471	92.9411765	10.9803922
758	80.7843137	34.1176471	92.9411765	10.9803922
759	92.9411765	34.1176471	92.9411765	10.9803922
760	100	34.1176471	92.9411765	10.9803922
761	0	22.3529412	22.3529412	0
762	9.4117647	22.3529412	22.3529412	0
763	22.3529412	22.3529412	22.3529412	0
764	40.3921569	22.3529412	22.3529412	0
765	60	22.3529412	22.3529412	0
766	76.4705882	22.3529412	22.3529412	0
767	87.8431373	22.3529412	22.3529412	0
768	95.2941176	22.3529412	22.3529412	0
769	100	22.3529412	22.3529412	0
770	0	76.4705882	22.3529412	0
771	9.4117647	76.4705882	22.3529412	0
772	22.3529412	76.4705882	22.3529412	0
773	40.3921569	76.4705882	22.3529412	0
774	60	76.4705882	22.3529412	0
775	76.4705882	76.4705882	22.3529412	0
776	87.8431373	76.4705882	22.3529412	0
777	95.2941176	76.4705882	22.3529412	0
778	100	76.4705882	22.3529412	0
779	0	100	22.3529412	0
780	9.4117647	100	22.3529412	0
781	22.3529412	100	22.3529412	0
782	40.3921569	100	22.3529412	0
783	60	100	22.3529412	0
784	76.4705882	100	22.3529412	0
785	87.8431373	100	22.3529412	0
786	95.2941176	100	22.3529412	0
787	100	100	22.3529412	0
788	0	0	80.7843137	100
789	1.9607843	0	0	0
790	0	1.9607843	0	0
791	0	0	1.9607843	0
792	0	34.1176471	100	10.9803922
793	12.9411765	34.1176471	100	10.9803922
794	34.1176471	34.1176471	100	10.9803922
795	60	34.1176471	100	10.9803922
796	80.7843137	34.1176471	100	10.9803922
797	92.9411765	34.1176471	100	10.9803922
798	100	34.1176471	100	10.9803922
799	0	22.3529412	40.3921569	0
800	9.4117647	22.3529412	40.3921569	0
801	22.3529412	22.3529412	40.3921569	0
802	40.3921569	22.3529412	40.3921569	0
803	60	22.3529412	40.3921569	0

804	76.4705882	22.3529412	40.3921569	0
805	87.8431373	22.3529412	40.3921569	0
806	95.2941176	22.3529412	40.3921569	0
807	100	22.3529412	40.3921569	0
808	0	76.4705882	40.3921569	0
809	9.4117647	76.4705882	40.3921569	0
810	22.3529412	76.4705882	40.3921569	0
811	40.3921569	76.4705882	40.3921569	0
812	60	76.4705882	40.3921569	0
813	76.4705882	76.4705882	40.3921569	0
814	87.8431373	76.4705882	40.3921569	0
815	95.2941176	76.4705882	40.3921569	0
816	100	76.4705882	40.3921569	0
817	0	100	40.3921569	0
818	9.4117647	100	40.3921569	0
819	22.3529412	100	40.3921569	0
820	40.3921569	100	40.3921569	0
821	60	100	40.3921569	0
822	76.4705882	100	40.3921569	0
823	87.8431373	100	40.3921569	0
824	95.2941176	100	40.3921569	0
825	100	100	40.3921569	0
826	0	0	100	100
827	3.9215686	0	0	0
828	0	3.9215686	0	0
829	0	0	3.9215686	0
830	0	60	0	10.9803922
831	12.9411765	60	0	10.9803922
832	34.1176471	60	0	10.9803922
833	60	60	0	10.9803922
834	80.7843137	60	0	10.9803922
835	92.9411765	60	0	10.9803922
836	100	60	0	10.9803922
837	0	22.3529412	60	0
838	9.4117647	22.3529412	60	0
839	22.3529412	22.3529412	60	0
840	40.3921569	22.3529412	60	0
841	60	22.3529412	60	0
842	76.4705882	22.3529412	60	0
843	87.8431373	22.3529412	60	0
844	95.2941176	22.3529412	60	0
845	100	22.3529412	60	0
846	0	76.4705882	60	0
847	9.4117647	76.4705882	60	0
848	22.3529412	76.4705882	60	0
849	40.3921569	76.4705882	60	0
850	60	76.4705882	60	0
851	76.4705882	76.4705882	60	0
852	87.8431373	76.4705882	60	0
853	95.2941176	76.4705882	60	0
854	100	76.4705882	60	0
855	0	100	60	0
856	9.4117647	100	60	0
857	22.3529412	100	60	0

858	40.3921569	100	60	0
859	60	100	60	0
860	76.4705882	100	60	0
861	87.8431373	100	60	0
862	95.2941176	100	60	0
863	100	100	60	0
864	34.1176471	0	0	100
865	5.8823529	0	0	0
866	0	5.8823529	0	0
867	0	0	5.8823529	0
868	0	60	12.9411765	10.9803922
869	12.9411765	60	12.9411765	10.9803922
870	34.1176471	60	12.9411765	10.9803922
871	60	60	12.9411765	10.9803922
872	80.7843137	60	12.9411765	10.9803922
873	92.9411765	60	12.9411765	10.9803922
874	100	60	12.9411765	10.9803922
875	0	22.3529412	76.4705882	0
876	9.4117647	22.3529412	76.4705882	0
877	22.3529412	22.3529412	76.4705882	0
878	40.3921569	22.3529412	76.4705882	0
879	60	22.3529412	76.4705882	0
880	76.4705882	22.3529412	76.4705882	0
881	87.8431373	22.3529412	76.4705882	0
882	95.2941176	22.3529412	76.4705882	0
883	100	22.3529412	76.4705882	0
884	0	76.4705882	76.4705882	0
885	9.4117647	76.4705882	76.4705882	0
886	22.3529412	76.4705882	76.4705882	0
887	40.3921569	76.4705882	76.4705882	0
888	60	76.4705882	76.4705882	0
889	76.4705882	76.4705882	76.4705882	0
890	87.8431373	76.4705882	76.4705882	0
891	95.2941176	76.4705882	76.4705882	0
892	100	76.4705882	76.4705882	0
893	0	100	76.4705882	0
894	9.4117647	100	76.4705882	0
895	22.3529412	100	76.4705882	0
896	40.3921569	100	76.4705882	0
897	60	100	76.4705882	0
898	76.4705882	100	76.4705882	0
899	87.8431373	100	76.4705882	0
900	95.2941176	100	76.4705882	0
901	100	100	76.4705882	0
902	34.1176471	0	34.1176471	100
903	7.8431373	0	0	0
904	0	7.8431373	0	0
905	0	0	7.8431373	0
906	0	60	34.1176471	10.9803922
907	12.9411765	60	34.1176471	10.9803922
908	34.1176471	60	34.1176471	10.9803922
909	60	60	34.1176471	10.9803922
910	80.7843137	60	34.1176471	10.9803922
911	92.9411765	60	34.1176471	10.9803922

912	100	60	34.1176471	10.9803922
913	0	22.3529412	87.8431373	0
914	9.4117647	22.3529412	87.8431373	0
915	22.3529412	22.3529412	87.8431373	0
916	40.3921569	22.3529412	87.8431373	0
917	60	22.3529412	87.8431373	0
918	76.4705882	22.3529412	87.8431373	0
919	87.8431373	22.3529412	87.8431373	0
920	95.2941176	22.3529412	87.8431373	0
921	100	22.3529412	87.8431373	0
922	0	76.4705882	87.8431373	0
923	9.4117647	76.4705882	87.8431373	0
924	22.3529412	76.4705882	87.8431373	0
925	40.3921569	76.4705882	87.8431373	0
926	60	76.4705882	87.8431373	0
927	76.4705882	76.4705882	87.8431373	0
928	87.8431373	76.4705882	87.8431373	0
929	95.2941176	76.4705882	87.8431373	0
930	100	76.4705882	87.8431373	0
931	0	100	87.8431373	0
932	9.4117647	100	87.8431373	0
933	22.3529412	100	87.8431373	0
934	40.3921569	100	87.8431373	0
935	60	100	87.8431373	0
936	76.4705882	100	87.8431373	0
937	87.8431373	100	87.8431373	0
938	95.2941176	100	87.8431373	0
939	100	100	87.8431373	0
940	34.1176471	0	80.7843137	100
941	9.8039216	0	0	0
942	0	9.8039216	0	0
943	0	0	9.8039216	0
944	0	60	60	10.9803922
945	12.9411765	60	60	10.9803922
946	34.1176471	60	60	10.9803922
947	60	60	60	10.9803922
948	80.7843137	60	60	10.9803922
949	92.9411765	60	60	10.9803922
950	100	60	60	10.9803922
951	0	22.3529412	95.2941176	0
952	9.4117647	22.3529412	95.2941176	0
953	22.3529412	22.3529412	95.2941176	0
954	40.3921569	22.3529412	95.2941176	0
955	60	22.3529412	95.2941176	0
956	76.4705882	22.3529412	95.2941176	0
957	87.8431373	22.3529412	95.2941176	0
958	95.2941176	22.3529412	95.2941176	0
959	100	22.3529412	95.2941176	0
960	0	76.4705882	95.2941176	0
961	9.4117647	76.4705882	95.2941176	0
962	22.3529412	76.4705882	95.2941176	0
963	40.3921569	76.4705882	95.2941176	0
964	60	76.4705882	95.2941176	0
965	76.4705882	76.4705882	95.2941176	0

966	87.8431373	76.4705882	95.2941176	0
967	95.2941176	76.4705882	95.2941176	0
968	100	76.4705882	95.2941176	0
969	0	100	95.2941176	0
970	9.4117647	100	95.2941176	0
971	22.3529412	100	95.2941176	0
972	40.3921569	100	95.2941176	0
973	60	100	95.2941176	0
974	76.4705882	100	95.2941176	0
975	87.8431373	100	95.2941176	0
976	95.2941176	100	95.2941176	0
977	100	100	95.2941176	0
978	34.1176471	0	100	100
979	14.9019608	0	0	0
980	0	14.9019608	0	0
981	0	0	14.9019608	0
982	0	60	80.7843137	10.9803922
983	12.9411765	60	80.7843137	10.9803922
984	34.1176471	60	80.7843137	10.9803922
985	60	60	80.7843137	10.9803922
986	80.7843137	60	80.7843137	10.9803922
987	92.9411765	60	80.7843137	10.9803922
988	100	60	80.7843137	10.9803922
989	0	22.3529412	100	0
990	9.4117647	22.3529412	100	0
991	22.3529412	22.3529412	100	0
992	40.3921569	22.3529412	100	0
993	60	22.3529412	100	0
994	76.4705882	22.3529412	100	0
995	87.8431373	22.3529412	100	0
996	95.2941176	22.3529412	100	0
997	100	22.3529412	100	0
998	0	76.4705882	100	0
999	9.4117647	76.4705882	100	0
1000	22.3529412	76.4705882	100	0
1001	40.3921569	76.4705882	100	0
1002	60	76.4705882	100	0
1003	76.4705882	76.4705882	100	0
1004	87.8431373	76.4705882	100	0
1005	95.2941176	76.4705882	100	0
1006	100	76.4705882	100	0
1007	0	100	100	0
1008	9.4117647	100	100	0
1009	22.3529412	100	100	0
1010	40.3921569	100	100	0
1011	60	100	100	0
1012	76.4705882	100	100	0
1013	87.8431373	100	100	0
1014	95.2941176	100	100	0
1015	100	100	100	0
1016	80.7843137	0	0	100
1017	20	0	0	0
1018	0	20	0	0
1019	0	0	20	0

1020	0	60	92.9411765	10.9803922
1021	12.9411765	60	92.9411765	10.9803922
1022	34.1176471	60	92.9411765	10.9803922
1023	60	60	92.9411765	10.9803922
1024	80.7843137	60	92.9411765	10.9803922
1025	92.9411765	60	92.9411765	10.9803922
1026	100	60	92.9411765	10.9803922
1027	0	0	0	0
1028	0	0	0	1.1764706
1029	0	0	0	1.9607843
1030	0	0	0	3.9215686
1031	0	0	0	5.8823529
1032	0	0	0	7.8431373
1033	0	0	0	9.8039216
1034	0	0	0	14.9019608
1035	0	0	0	20
1036	0	0	0	25.0980392
1037	0	0	0	29.8039216
1038	0	0	0	34.9019608
1039	0	0	0	40
1040	0	0	0	45.0980392
1041	0	0	0	49.8039216
1042	0	0	0	54.9019608
1043	0	0	0	60
1044	0	0	0	65.0980392
1045	0	0	0	69.8039216
1046	0	0	0	74.9019608
1047	0	0	0	80
1048	0	0	0	85.0980392
1049	0	0	0	89.8039216
1050	0	0	0	92.1568627
1051	0	0	0	94.9019608
1052	0	0	0	98.0392157
1053	0	0	0	100
1054	80.7843137	0	34.1176471	100
1055	25.0980392	0	0	0
1056	0	25.0980392	0	0
1057	0	0	25.0980392	0
1058	0	60	100	10.9803922
1059	12.9411765	60	100	10.9803922
1060	34.1176471	60	100	10.9803922
1061	60	60	100	10.9803922
1062	80.7843137	60	100	10.9803922
1063	92.9411765	60	100	10.9803922
1064	100	60	100	10.9803922
1065	0	0	0	0
1066	1.1764706	1.1764706	1.1764706	0
1067	1.9607843	1.9607843	1.9607843	0
1068	3.9215686	3.9215686	3.9215686	0
1069	5.8823529	5.8823529	5.8823529	0
1070	7.8431373	7.8431373	7.8431373	0
1071	9.8039216	9.8039216	9.8039216	0
1072	14.9019608	14.9019608	14.9019608	0
1073	20	20	20	0

1074	25.0980392	25.0980392	25.0980392	0
1075	29.8039216	29.8039216	29.8039216	0
1076	34.9019608	34.9019608	34.9019608	0
1077	40	40	40	0
1078	45.0980392	45.0980392	45.0980392	0
1079	49.8039216	49.8039216	49.8039216	0
1080	54.9019608	54.9019608	54.9019608	0
1081	60	60	60	0
1082	65.0980392	65.0980392	65.0980392	0
1083	69.8039216	69.8039216	69.8039216	0
1084	74.9019608	74.9019608	74.9019608	0
1085	80	80	80	0
1086	85.0980392	85.0980392	85.0980392	0
1087	89.8039216	89.8039216	89.8039216	0
1088	92.1568627	92.1568627	92.1568627	0
1089	94.9019608	94.9019608	94.9019608	0
1090	98.0392157	98.0392157	98.0392157	0
1091	100	100	100	0
1092	80.7843137	0	80.7843137	100
1093	29.8039216	0	0	0
1094	0	29.8039216	0	0
1095	0	0	29.8039216	0
1096	0	80.7843137	0	10.9803922
1097	12.9411765	80.7843137	0	10.9803922
1098	34.1176471	80.7843137	0	10.9803922
1099	60	80.7843137	0	10.9803922
1100	80.7843137	80.7843137	0	10.9803922
1101	92.9411765	80.7843137	0	10.9803922
1102	100	80.7843137	0	10.9803922
1103	0	0	0	0
1104	1.1764706	0.7843137	0.7843137	0
1105	1.9607843	1.1764706	1.1764706	0
1106	3.9215686	2.745098	2.745098	0
1107	5.8823529	4.3137255	4.3137255	0
1108	7.8431373	5.4901961	5.4901961	0
1109	9.8039216	7.0588235	7.0588235	0
1110	14.9019608	10.9803922	10.9803922	0
1111	20	14.9019608	14.9019608	0
1112	25.0980392	18.8235294	18.8235294	0
1113	29.8039216	22.745098	22.745098	0
1114	34.9019608	27.0588235	27.0588235	0
1115	40	31.372549	31.372549	0
1116	45.0980392	35.6862745	35.6862745	0
1117	49.8039216	40	40	0
1118	54.9019608	45.0980392	45.0980392	0
1119	60	50.1960784	50.1960784	0
1120	65.0980392	55.2941176	55.2941176	0
1121	69.8039216	60.3921569	60.3921569	0
1122	74.9019608	65.8823529	65.8823529	0
1123	80	71.7647059	71.7647059	0
1124	85.0980392	78.0392157	78.0392157	0
1125	89.8039216	84.3137255	84.3137255	0
1126	92.1568627	87.8431373	87.8431373	0
1127	94.9019608	92.1568627	92.1568627	0

1128	98.0392157	96.8627451	96.8627451	0
1129	100	100	100	0
1130	80.7843137	0	100	100
1131	34.9019608	0	0	0
1132	0	34.9019608	0	0
1133	0	0	34.9019608	0
1134	0	80.7843137	12.9411765	10.9803922
1135	12.9411765	80.7843137	12.9411765	10.9803922
1136	34.1176471	80.7843137	12.9411765	10.9803922
1137	60	80.7843137	12.9411765	10.9803922
1138	80.7843137	80.7843137	12.9411765	10.9803922
1139	92.9411765	80.7843137	12.9411765	10.9803922
1140	100	80.7843137	12.9411765	10.9803922
1141	0	0	0	27.0588235
1142	16.4705882	0	0	27.0588235
1143	44.3137255	0	0	27.0588235
1144	73.3333333	0	0	27.0588235
1145	90.9803922	0	0	27.0588235
1146	100	0	0	27.0588235
1147	0	44.3137255	0	27.0588235
1148	16.4705882	44.3137255	0	27.0588235
1149	44.3137255	44.3137255	0	27.0588235
1150	73.3333333	44.3137255	0	27.0588235
1151	90.9803922	44.3137255	0	27.0588235
1152	100	44.3137255	0	27.0588235
1153	0	90.9803922	0	27.0588235
1154	16.4705882	90.9803922	0	27.0588235
1155	44.3137255	90.9803922	0	27.0588235
1156	73.3333333	90.9803922	0	27.0588235
1157	90.9803922	90.9803922	0	27.0588235
1158	100	90.9803922	0	27.0588235
1159	0	0	0	69.8039216
1160	22.3529412	0	0	69.8039216
1161	60	0	0	69.8039216
1162	87.8431373	0	0	69.8039216
1163	100	0	0	69.8039216
1164	0	87.8431373	0	69.8039216
1165	22.3529412	87.8431373	0	69.8039216
1166	60	87.8431373	0	69.8039216
1167	87.8431373	87.8431373	0	69.8039216
1168	100	87.8431373	0	69.8039216
1169	40	0	0	0
1170	0	40	0	0
1171	0	0	40	0
1172	0	80.7843137	34.1176471	10.9803922
1173	12.9411765	80.7843137	34.1176471	10.9803922
1174	34.1176471	80.7843137	34.1176471	10.9803922
1175	60	80.7843137	34.1176471	10.9803922
1176	80.7843137	80.7843137	34.1176471	10.9803922
1177	92.9411765	80.7843137	34.1176471	10.9803922
1178	100	80.7843137	34.1176471	10.9803922
1179	0	0	16.4705882	27.0588235
1180	16.4705882	0	16.4705882	27.0588235
1181	44.3137255	0	16.4705882	27.0588235

1182	73.3333333	0	16.4705882	27.0588235
1183	90.9803922	0	16.4705882	27.0588235
1184	100	0	16.4705882	27.0588235
1185	0	44.3137255	16.4705882	27.0588235
1186	16.4705882	44.3137255	16.4705882	27.0588235
1187	44.3137255	44.3137255	16.4705882	27.0588235
1188	73.3333333	44.3137255	16.4705882	27.0588235
1189	90.9803922	44.3137255	16.4705882	27.0588235
1190	100	44.3137255	16.4705882	27.0588235
1191	0	90.9803922	16.4705882	27.0588235
1192	16.4705882	90.9803922	16.4705882	27.0588235
1193	44.3137255	90.9803922	16.4705882	27.0588235
1194	73.3333333	90.9803922	16.4705882	27.0588235
1195	90.9803922	90.9803922	16.4705882	27.0588235
1196	100	90.9803922	16.4705882	27.0588235
1197	0	0	22.3529412	69.8039216
1198	22.3529412	0	22.3529412	69.8039216
1199	60	0	22.3529412	69.8039216
1200	87.8431373	0	22.3529412	69.8039216
1201	100	0	22.3529412	69.8039216
1202	0	87.8431373	22.3529412	69.8039216
1203	22.3529412	87.8431373	22.3529412	69.8039216
1204	60	87.8431373	22.3529412	69.8039216
1205	87.8431373	87.8431373	22.3529412	69.8039216
1206	100	87.8431373	22.3529412	69.8039216
1207	45.0980392	0	0	0
1208	0	45.0980392	0	0
1209	0	0	45.0980392	0
1210	0	80.7843137	60	10.9803922
1211	12.9411765	80.7843137	60	10.9803922
1212	34.1176471	80.7843137	60	10.9803922
1213	60	80.7843137	60	10.9803922
1214	80.7843137	80.7843137	60	10.9803922
1215	92.9411765	80.7843137	60	10.9803922
1216	100	80.7843137	60	10.9803922
1217	0	0	44.3137255	27.0588235
1218	16.4705882	0	44.3137255	27.0588235
1219	44.3137255	0	44.3137255	27.0588235
1220	73.3333333	0	44.3137255	27.0588235
1221	90.9803922	0	44.3137255	27.0588235
1222	100	0	44.3137255	27.0588235
1223	0	44.3137255	44.3137255	27.0588235
1224	16.4705882	44.3137255	44.3137255	27.0588235
1225	44.3137255	44.3137255	44.3137255	27.0588235
1226	73.3333333	44.3137255	44.3137255	27.0588235
1227	90.9803922	44.3137255	44.3137255	27.0588235
1228	100	44.3137255	44.3137255	27.0588235
1229	0	90.9803922	44.3137255	27.0588235
1230	16.4705882	90.9803922	44.3137255	27.0588235
1231	44.3137255	90.9803922	44.3137255	27.0588235
1232	73.3333333	90.9803922	44.3137255	27.0588235
1233	90.9803922	90.9803922	44.3137255	27.0588235
1234	100	90.9803922	44.3137255	27.0588235
1235	0	0	60	69.8039216

1236	22.3529412	0	60	69.8039216
1237	60	0	60	69.8039216
1238	87.8431373	0	60	69.8039216
1239	100	0	60	69.8039216
1240	0	87.8431373	60	69.8039216
1241	22.3529412	87.8431373	60	69.8039216
1242	60	87.8431373	60	69.8039216
1243	87.8431373	87.8431373	60	69.8039216
1244	100	87.8431373	60	69.8039216
1245	49.8039216	0	0	0
1246	0	49.8039216	0	0
1247	0	0	49.8039216	0
1248	0	80.7843137	80.7843137	10.9803922
1249	12.9411765	80.7843137	80.7843137	10.9803922
1250	34.1176471	80.7843137	80.7843137	10.9803922
1251	60	80.7843137	80.7843137	10.9803922
1252	80.7843137	80.7843137	80.7843137	10.9803922
1253	92.9411765	80.7843137	80.7843137	10.9803922
1254	100	80.7843137	80.7843137	10.9803922
1255	0	0	73.3333333	27.0588235
1256	16.4705882	0	73.3333333	27.0588235
1257	44.3137255	0	73.3333333	27.0588235
1258	73.3333333	0	73.3333333	27.0588235
1259	90.9803922	0	73.3333333	27.0588235
1260	100	0	73.3333333	27.0588235
1261	0	44.3137255	73.3333333	27.0588235
1262	16.4705882	44.3137255	73.3333333	27.0588235
1263	44.3137255	44.3137255	73.3333333	27.0588235
1264	73.3333333	44.3137255	73.3333333	27.0588235
1265	90.9803922	44.3137255	73.3333333	27.0588235
1266	100	44.3137255	73.3333333	27.0588235
1267	0	90.9803922	73.3333333	27.0588235
1268	16.4705882	90.9803922	73.3333333	27.0588235
1269	44.3137255	90.9803922	73.3333333	27.0588235
1270	73.3333333	90.9803922	73.3333333	27.0588235
1271	90.9803922	90.9803922	73.3333333	27.0588235
1272	100	90.9803922	73.3333333	27.0588235
1273	0	0	87.8431373	69.8039216
1274	22.3529412	0	87.8431373	69.8039216
1275	60	0	87.8431373	69.8039216
1276	87.8431373	0	87.8431373	69.8039216
1277	100	0	87.8431373	69.8039216
1278	0	87.8431373	87.8431373	69.8039216
1279	22.3529412	87.8431373	87.8431373	69.8039216
1280	60	87.8431373	87.8431373	69.8039216
1281	87.8431373	87.8431373	87.8431373	69.8039216
1282	100	87.8431373	87.8431373	69.8039216
1283	54.9019608	0	0	0
1284	0	54.9019608	0	0
1285	0	0	54.9019608	0
1286	0	80.7843137	92.9411765	10.9803922
1287	12.9411765	80.7843137	92.9411765	10.9803922
1288	34.1176471	80.7843137	92.9411765	10.9803922
1289	60	80.7843137	92.9411765	10.9803922

1290	80.7843137	80.7843137	92.9411765	10.9803922
1291	92.9411765	80.7843137	92.9411765	10.9803922
1292	100	80.7843137	92.9411765	10.9803922
1293	0	0	90.9803922	27.0588235
1294	16.4705882	0	90.9803922	27.0588235
1295	44.3137255	0	90.9803922	27.0588235
1296	73.3333333	0	90.9803922	27.0588235
1297	90.9803922	0	90.9803922	27.0588235
1298	100	0	90.9803922	27.0588235
1299	0	44.3137255	90.9803922	27.0588235
1300	16.4705882	44.3137255	90.9803922	27.0588235
1301	44.3137255	44.3137255	90.9803922	27.0588235
1302	73.3333333	44.3137255	90.9803922	27.0588235
1303	90.9803922	44.3137255	90.9803922	27.0588235
1304	100	44.3137255	90.9803922	27.0588235
1305	0	90.9803922	90.9803922	27.0588235
1306	16.4705882	90.9803922	90.9803922	27.0588235
1307	44.3137255	90.9803922	90.9803922	27.0588235
1308	73.3333333	90.9803922	90.9803922	27.0588235
1309	90.9803922	90.9803922	90.9803922	27.0588235
1310	100	90.9803922	90.9803922	27.0588235
1311	0	0	100	69.8039216
1312	22.3529412	0	100	69.8039216
1313	60	0	100	69.8039216
1314	87.8431373	0	100	69.8039216
1315	100	0	100	69.8039216
1316	0	87.8431373	100	69.8039216
1317	22.3529412	87.8431373	100	69.8039216
1318	60	87.8431373	100	69.8039216
1319	87.8431373	87.8431373	100	69.8039216
1320	100	87.8431373	100	69.8039216
1321	60	0	0	0
1322	0	60	0	0
1323	0	0	60	0
1324	0	80.7843137	100	10.9803922
1325	12.9411765	80.7843137	100	10.9803922
1326	34.1176471	80.7843137	100	10.9803922
1327	60	80.7843137	100	10.9803922
1328	80.7843137	80.7843137	100	10.9803922
1329	92.9411765	80.7843137	100	10.9803922
1330	100	80.7843137	100	10.9803922
1331	0	0	100	27.0588235
1332	16.4705882	0	100	27.0588235
1333	44.3137255	0	100	27.0588235
1334	73.3333333	0	100	27.0588235
1335	90.9803922	0	100	27.0588235
1336	100	0	100	27.0588235
1337	0	44.3137255	100	27.0588235
1338	16.4705882	44.3137255	100	27.0588235
1339	44.3137255	44.3137255	100	27.0588235
1340	73.3333333	44.3137255	100	27.0588235
1341	90.9803922	44.3137255	100	27.0588235
1342	100	44.3137255	100	27.0588235
1343	0	90.9803922	100	27.0588235

1344	16.4705882	90.9803922	100	27.0588235
1345	44.3137255	90.9803922	100	27.0588235
1346	73.3333333	90.9803922	100	27.0588235
1347	90.9803922	90.9803922	100	27.0588235
1348	100	90.9803922	100	27.0588235
1349	0	22.3529412	0	69.8039216
1350	22.3529412	22.3529412	0	69.8039216
1351	60	22.3529412	0	69.8039216
1352	87.8431373	22.3529412	0	69.8039216
1353	100	22.3529412	0	69.8039216
1354	0	100	0	69.8039216
1355	22.3529412	100	0	69.8039216
1356	60	100	0	69.8039216
1357	87.8431373	100	0	69.8039216
1358	100	100	0	69.8039216
1359	65.0980392	0	0	0
1360	0	65.0980392	0	0
1361	0	0	65.0980392	0
1362	0	92.9411765	0	10.9803922
1363	12.9411765	92.9411765	0	10.9803922
1364	34.1176471	92.9411765	0	10.9803922
1365	60	92.9411765	0	10.9803922
1366	80.7843137	92.9411765	0	10.9803922
1367	92.9411765	92.9411765	0	10.9803922
1368	100	92.9411765	0	10.9803922
1369	0	16.4705882	0	27.0588235
1370	16.4705882	16.4705882	0	27.0588235
1371	44.3137255	16.4705882	0	27.0588235
1372	73.3333333	16.4705882	0	27.0588235
1373	90.9803922	16.4705882	0	27.0588235
1374	100	16.4705882	0	27.0588235
1375	0	73.3333333	0	27.0588235
1376	16.4705882	73.3333333	0	27.0588235
1377	44.3137255	73.3333333	0	27.0588235
1378	73.3333333	73.3333333	0	27.0588235
1379	90.9803922	73.3333333	0	27.0588235
1380	100	73.3333333	0	27.0588235
1381	0	100	0	27.0588235
1382	16.4705882	100	0	27.0588235
1383	44.3137255	100	0	27.0588235
1384	73.3333333	100	0	27.0588235
1385	90.9803922	100	0	27.0588235
1386	100	100	0	27.0588235
1387	0	22.3529412	22.3529412	69.8039216
1388	22.3529412	22.3529412	22.3529412	69.8039216
1389	60	22.3529412	22.3529412	69.8039216
1390	87.8431373	22.3529412	22.3529412	69.8039216
1391	100	22.3529412	22.3529412	69.8039216
1392	0	100	22.3529412	69.8039216
1393	22.3529412	100	22.3529412	69.8039216
1394	60	100	22.3529412	69.8039216
1395	87.8431373	100	22.3529412	69.8039216
1396	100	100	22.3529412	69.8039216
1397	69.8039216	0	0	0

1398	0	69.8039216	0	0
1399	0	0	69.8039216	0
1400	0	92.9411765	12.9411765	10.9803922
1401	12.9411765	92.9411765	12.9411765	10.9803922
1402	34.1176471	92.9411765	12.9411765	10.9803922
1403	60	92.9411765	12.9411765	10.9803922
1404	80.7843137	92.9411765	12.9411765	10.9803922
1405	92.9411765	92.9411765	12.9411765	10.9803922
1406	100	92.9411765	12.9411765	10.9803922
1407	0	16.4705882	16.4705882	27.0588235
1408	16.4705882	16.4705882	16.4705882	27.0588235
1409	44.3137255	16.4705882	16.4705882	27.0588235
1410	73.3333333	16.4705882	16.4705882	27.0588235
1411	90.9803922	16.4705882	16.4705882	27.0588235
1412	100	16.4705882	16.4705882	27.0588235
1413	0	73.3333333	16.4705882	27.0588235
1414	16.4705882	73.3333333	16.4705882	27.0588235
1415	44.3137255	73.3333333	16.4705882	27.0588235
1416	73.3333333	73.3333333	16.4705882	27.0588235
1417	90.9803922	73.3333333	16.4705882	27.0588235
1418	100	73.3333333	16.4705882	27.0588235
1419	0	100	16.4705882	27.0588235
1420	16.4705882	100	16.4705882	27.0588235
1421	44.3137255	100	16.4705882	27.0588235
1422	73.3333333	100	16.4705882	27.0588235
1423	90.9803922	100	16.4705882	27.0588235
1424	100	100	16.4705882	27.0588235
1425	0	22.3529412	60	69.8039216
1426	22.3529412	22.3529412	60	69.8039216
1427	60	22.3529412	60	69.8039216
1428	87.8431373	22.3529412	60	69.8039216
1429	100	22.3529412	60	69.8039216
1430	0	100	60	69.8039216
1431	22.3529412	100	60	69.8039216
1432	60	100	60	69.8039216
1433	87.8431373	100	60	69.8039216
1434	100	100	60	69.8039216
1435	74.9019608	0	0	0
1436	0	74.9019608	0	0
1437	0	0	74.9019608	0
1438	0	92.9411765	34.1176471	10.9803922
1439	12.9411765	92.9411765	34.1176471	10.9803922
1440	34.1176471	92.9411765	34.1176471	10.9803922
1441	60	92.9411765	34.1176471	10.9803922
1442	80.7843137	92.9411765	34.1176471	10.9803922
1443	92.9411765	92.9411765	34.1176471	10.9803922
1444	100	92.9411765	34.1176471	10.9803922
1445	0	16.4705882	44.3137255	27.0588235
1446	16.4705882	16.4705882	44.3137255	27.0588235
1447	44.3137255	16.4705882	44.3137255	27.0588235
1448	73.3333333	16.4705882	44.3137255	27.0588235
1449	90.9803922	16.4705882	44.3137255	27.0588235
1450	100	16.4705882	44.3137255	27.0588235
1451	0	73.3333333	44.3137255	27.0588235

1452	16.4705882	73.3333333	44.3137255	27.0588235
1453	44.3137255	73.3333333	44.3137255	27.0588235
1454	73.3333333	73.3333333	44.3137255	27.0588235
1455	90.9803922	73.3333333	44.3137255	27.0588235
1456	100	73.3333333	44.3137255	27.0588235
1457	0	100	44.3137255	27.0588235
1458	16.4705882	100	44.3137255	27.0588235
1459	44.3137255	100	44.3137255	27.0588235
1460	73.3333333	100	44.3137255	27.0588235
1461	90.9803922	100	44.3137255	27.0588235
1462	100	100	44.3137255	27.0588235
1463	0	22.3529412	87.8431373	69.8039216
1464	22.3529412	22.3529412	87.8431373	69.8039216
1465	60	22.3529412	87.8431373	69.8039216
1466	87.8431373	22.3529412	87.8431373	69.8039216
1467	100	22.3529412	87.8431373	69.8039216
1468	0	100	87.8431373	69.8039216
1469	22.3529412	100	87.8431373	69.8039216
1470	60	100	87.8431373	69.8039216
1471	87.8431373	100	87.8431373	69.8039216
1472	100	100	87.8431373	69.8039216
1473	80	0	0	0
1474	0	80	0	0
1475	0	0	80	0
1476	0	92.9411765	60	10.9803922
1477	12.9411765	92.9411765	60	10.9803922
1478	34.1176471	92.9411765	60	10.9803922
1479	60	92.9411765	60	10.9803922
1480	80.7843137	92.9411765	60	10.9803922
1481	92.9411765	92.9411765	60	10.9803922
1482	100	92.9411765	60	10.9803922
1483	0	16.4705882	73.3333333	27.0588235
1484	16.4705882	16.4705882	73.3333333	27.0588235
1485	44.3137255	16.4705882	73.3333333	27.0588235
1486	73.3333333	16.4705882	73.3333333	27.0588235
1487	90.9803922	16.4705882	73.3333333	27.0588235
1488	100	16.4705882	73.3333333	27.0588235
1489	0	73.3333333	73.3333333	27.0588235
1490	16.4705882	73.3333333	73.3333333	27.0588235
1491	44.3137255	73.3333333	73.3333333	27.0588235
1492	73.3333333	73.3333333	73.3333333	27.0588235
1493	90.9803922	73.3333333	73.3333333	27.0588235
1494	100	73.3333333	73.3333333	27.0588235
1495	0	100	73.3333333	27.0588235
1496	16.4705882	100	73.3333333	27.0588235
1497	44.3137255	100	73.3333333	27.0588235
1498	73.3333333	100	73.3333333	27.0588235
1499	90.9803922	100	73.3333333	27.0588235
1500	100	100	73.3333333	27.0588235
1501	0	22.3529412	100	69.8039216
1502	22.3529412	22.3529412	100	69.8039216
1503	60	22.3529412	100	69.8039216
1504	87.8431373	22.3529412	100	69.8039216
1505	100	22.3529412	100	69.8039216

1506	0	100	100	69.8039216
1507	22.3529412	100	100	69.8039216
1508	60	100	100	69.8039216
1509	87.8431373	100	100	69.8039216
1510	100	100	100	69.8039216
1511	85.0980392	0	0	0
1512	0	85.0980392	0	0
1513	0	0	85.0980392	0
1514	0	92.9411765	80.7843137	10.9803922
1515	12.9411765	92.9411765	80.7843137	10.9803922
1516	34.1176471	92.9411765	80.7843137	10.9803922
1517	60	92.9411765	80.7843137	10.9803922
1518	80.7843137	92.9411765	80.7843137	10.9803922
1519	92.9411765	92.9411765	80.7843137	10.9803922
1520	100	92.9411765	80.7843137	10.9803922
1521	0	16.4705882	90.9803922	27.0588235
1522	16.4705882	16.4705882	90.9803922	27.0588235
1523	44.3137255	16.4705882	90.9803922	27.0588235
1524	73.3333333	16.4705882	90.9803922	27.0588235
1525	90.9803922	16.4705882	90.9803922	27.0588235
1526	100	16.4705882	90.9803922	27.0588235
1527	0	73.3333333	90.9803922	27.0588235
1528	16.4705882	73.3333333	90.9803922	27.0588235
1529	44.3137255	73.3333333	90.9803922	27.0588235
1530	73.3333333	73.3333333	90.9803922	27.0588235
1531	90.9803922	73.3333333	90.9803922	27.0588235
1532	100	73.3333333	90.9803922	27.0588235
1533	0	100	90.9803922	27.0588235
1534	16.4705882	100	90.9803922	27.0588235
1535	44.3137255	100	90.9803922	27.0588235
1536	73.3333333	100	90.9803922	27.0588235
1537	90.9803922	100	90.9803922	27.0588235
1538	100	100	90.9803922	27.0588235
1539	0	60	0	69.8039216
1540	22.3529412	60	0	69.8039216
1541	60	60	0	69.8039216
1542	87.8431373	60	0	69.8039216
1543	100	60	0	69.8039216
1544	0	0	0	85.0980392
1545	22.3529412	0	0	85.0980392
1546	60	0	0	85.0980392
1547	87.8431373	0	0	85.0980392
1548	100	0	0	85.0980392
1549	89.8039216	0	0	0
1550	0	89.8039216	0	0
1551	0	0	89.8039216	0
1552	0	92.9411765	92.9411765	10.9803922
1553	12.9411765	92.9411765	92.9411765	10.9803922
1554	34.1176471	92.9411765	92.9411765	10.9803922
1555	60	92.9411765	92.9411765	10.9803922
1556	80.7843137	92.9411765	92.9411765	10.9803922
1557	92.9411765	92.9411765	92.9411765	10.9803922
1558	100	92.9411765	92.9411765	10.9803922
1559	0	16.4705882	100	27.0588235

1560	16.4705882	16.4705882	100	27.0588235
1561	44.3137255	16.4705882	100	27.0588235
1562	73.3333333	16.4705882	100	27.0588235
1563	90.9803922	16.4705882	100	27.0588235
1564	100	16.4705882	100	27.0588235
1565	0	73.3333333	100	27.0588235
1566	16.4705882	73.3333333	100	27.0588235
1567	44.3137255	73.3333333	100	27.0588235
1568	73.3333333	73.3333333	100	27.0588235
1569	90.9803922	73.3333333	100	27.0588235
1570	100	73.3333333	100	27.0588235
1571	0	100	100	27.0588235
1572	16.4705882	100	100	27.0588235
1573	44.3137255	100	100	27.0588235
1574	73.3333333	100	100	27.0588235
1575	90.9803922	100	100	27.0588235
1576	100	100	100	27.0588235
1577	0	60	22.3529412	69.8039216
1578	22.3529412	60	22.3529412	69.8039216
1579	60	60	22.3529412	69.8039216
1580	87.8431373	60	22.3529412	69.8039216
1581	100	60	22.3529412	69.8039216
1582	0	0	22.3529412	85.0980392
1583	22.3529412	0	22.3529412	85.0980392
1584	60	0	22.3529412	85.0980392
1585	87.8431373	0	22.3529412	85.0980392
1586	100	0	22.3529412	85.0980392
1587	92.1568627	0	0	0
1588	0	92.1568627	0	0
1589	0	0	92.1568627	0
1590	0	92.9411765	100	10.9803922
1591	12.9411765	92.9411765	100	10.9803922
1592	34.1176471	92.9411765	100	10.9803922
1593	60	92.9411765	100	10.9803922
1594	80.7843137	92.9411765	100	10.9803922
1595	92.9411765	92.9411765	100	10.9803922
1596	100	92.9411765	100	10.9803922
1597	0	0	0	49.0196078
1598	16.4705882	0	0	49.0196078
1599	44.3137255	0	0	49.0196078
1600	73.3333333	0	0	49.0196078
1601	90.9803922	0	0	49.0196078
1602	100	0	0	49.0196078
1603	0	44.3137255	0	49.0196078
1604	16.4705882	44.3137255	0	49.0196078
1605	44.3137255	44.3137255	0	49.0196078
1606	73.3333333	44.3137255	0	49.0196078
1607	90.9803922	44.3137255	0	49.0196078
1608	100	44.3137255	0	49.0196078
1609	0	90.9803922	0	49.0196078
1610	16.4705882	90.9803922	0	49.0196078
1611	44.3137255	90.9803922	0	49.0196078
1612	73.3333333	90.9803922	0	49.0196078
1613	90.9803922	90.9803922	0	49.0196078

1614	100	90.9803922	0	49.0196078
1615	0	60	60	69.8039216
1616	22.3529412	60	60	69.8039216
1617	60	60	60	69.8039216
1618	87.8431373	60	60	69.8039216
1619	100	60	60	69.8039216
1620	0	0	60	85.0980392
1621	22.3529412	0	60	85.0980392
1622	60	0	60	85.0980392
1623	87.8431373	0	60	85.0980392
1624	100	0	60	85.0980392
1625	94.9019608	0	0	0
1626	0	94.9019608	0	0
1627	0	0	94.9019608	0
1628	0	100	0	10.9803922
1629	12.9411765	100	0	10.9803922
1630	34.1176471	100	0	10.9803922
1631	60	100	0	10.9803922
1632	80.7843137	100	0	10.9803922
1633	92.9411765	100	0	10.9803922
1634	100	100	0	10.9803922
1635	0	0	16.4705882	49.0196078
1636	16.4705882	0	16.4705882	49.0196078
1637	44.3137255	0	16.4705882	49.0196078
1638	73.3333333	0	16.4705882	49.0196078
1639	90.9803922	0	16.4705882	49.0196078
1640	100	0	16.4705882	49.0196078
1641	0	44.3137255	16.4705882	49.0196078
1642	16.4705882	44.3137255	16.4705882	49.0196078
1643	44.3137255	44.3137255	16.4705882	49.0196078
1644	73.3333333	44.3137255	16.4705882	49.0196078
1645	90.9803922	44.3137255	16.4705882	49.0196078
1646	100	44.3137255	16.4705882	49.0196078
1647	0	90.9803922	16.4705882	49.0196078
1648	16.4705882	90.9803922	16.4705882	49.0196078
1649	44.3137255	90.9803922	16.4705882	49.0196078
1650	73.3333333	90.9803922	16.4705882	49.0196078
1651	90.9803922	90.9803922	16.4705882	49.0196078
1652	100	90.9803922	16.4705882	49.0196078
1653	0	60	87.8431373	69.8039216
1654	22.3529412	60	87.8431373	69.8039216
1655	60	60	87.8431373	69.8039216
1656	87.8431373	60	87.8431373	69.8039216
1657	100	60	87.8431373	69.8039216
1658	0	0	87.8431373	85.0980392
1659	22.3529412	0	87.8431373	85.0980392
1660	60	0	87.8431373	85.0980392
1661	87.8431373	0	87.8431373	85.0980392
1662	100	0	87.8431373	85.0980392
1663	98.0392157	0	0	0
1664	0	98.0392157	0	0
1665	0	0	98.0392157	0
1666	0	100	12.9411765	10.9803922
1667	12.9411765	100	12.9411765	10.9803922

1668	34.1176471	100	12.9411765	10.9803922
1669	60	100	12.9411765	10.9803922
1670	80.7843137	100	12.9411765	10.9803922
1671	92.9411765	100	12.9411765	10.9803922
1672	100	100	12.9411765	10.9803922
1673	0	0	44.3137255	49.0196078
1674	16.4705882	0	44.3137255	49.0196078
1675	44.3137255	0	44.3137255	49.0196078
1676	73.3333333	0	44.3137255	49.0196078
1677	90.9803922	0	44.3137255	49.0196078
1678	100	0	44.3137255	49.0196078
1679	0	44.3137255	44.3137255	49.0196078
1680	16.4705882	44.3137255	44.3137255	49.0196078
1681	44.3137255	44.3137255	44.3137255	49.0196078
1682	73.3333333	44.3137255	44.3137255	49.0196078
1683	90.9803922	44.3137255	44.3137255	49.0196078
1684	100	44.3137255	44.3137255	49.0196078
1685	0	90.9803922	44.3137255	49.0196078
1686	16.4705882	90.9803922	44.3137255	49.0196078
1687	44.3137255	90.9803922	44.3137255	49.0196078
1688	73.3333333	90.9803922	44.3137255	49.0196078
1689	90.9803922	90.9803922	44.3137255	49.0196078
1690	100	90.9803922	44.3137255	49.0196078
1691	0	60	100	69.8039216
1692	22.3529412	60	100	69.8039216
1693	60	60	100	69.8039216
1694	87.8431373	60	100	69.8039216
1695	100	60	100	69.8039216
1696	0	0	100	85.0980392
1697	22.3529412	0	100	85.0980392
1698	60	0	100	85.0980392
1699	87.8431373	0	100	85.0980392
1700	100	0	100	85.0980392
1701	100	0	0	0
1702	0	100	0	0
1703	0	0	100	0
1704	0	100	34.1176471	10.9803922
1705	12.9411765	100	34.1176471	10.9803922
1706	34.1176471	100	34.1176471	10.9803922
1707	60	100	34.1176471	10.9803922
1708	80.7843137	100	34.1176471	10.9803922
1709	92.9411765	100	34.1176471	10.9803922
1710	100	100	34.1176471	10.9803922
1711	0	0	73.3333333	49.0196078
1712	16.4705882	0	73.3333333	49.0196078
1713	44.3137255	0	73.3333333	49.0196078
1714	73.3333333	0	73.3333333	49.0196078
1715	90.9803922	0	73.3333333	49.0196078
1716	100	0	73.3333333	49.0196078
1717	0	44.3137255	73.3333333	49.0196078
1718	16.4705882	44.3137255	73.3333333	49.0196078
1719	44.3137255	44.3137255	73.3333333	49.0196078
1720	73.3333333	44.3137255	73.3333333	49.0196078
1721	90.9803922	44.3137255	73.3333333	49.0196078

1722	100	44.3137255	73.3333333	49.0196078
1723	0	90.9803922	73.3333333	49.0196078
1724	16.4705882	90.9803922	73.3333333	49.0196078
1725	44.3137255	90.9803922	73.3333333	49.0196078
1726	73.3333333	90.9803922	73.3333333	49.0196078
1727	90.9803922	90.9803922	73.3333333	49.0196078
1728	100	90.9803922	73.3333333	49.0196078
1729	100	0	0	100
1730	0	34.1176471	0	100
1731	34.1176471	34.1176471	0	100
1732	80.7843137	34.1176471	0	100
1733	100	34.1176471	0	100
1734	0	80.7843137	0	100
1735	34.1176471	80.7843137	0	100
1736	80.7843137	80.7843137	0	100
1737	100	80.7843137	0	100
1738	0	100	0	100
1739	34.1176471	100	0	100
1740	80.7843137	100	0	100
1741	100	100	0	100
1742	0	100	60	10.9803922
1743	12.9411765	100	60	10.9803922
1744	34.1176471	100	60	10.9803922
1745	60	100	60	10.9803922
1746	80.7843137	100	60	10.9803922
1747	92.9411765	100	60	10.9803922
1748	100	100	60	10.9803922
1749	0	0	90.9803922	49.0196078
1750	16.4705882	0	90.9803922	49.0196078
1751	44.3137255	0	90.9803922	49.0196078
1752	73.3333333	0	90.9803922	49.0196078
1753	90.9803922	0	90.9803922	49.0196078
1754	100	0	90.9803922	49.0196078
1755	0	44.3137255	90.9803922	49.0196078
1756	16.4705882	44.3137255	90.9803922	49.0196078
1757	44.3137255	44.3137255	90.9803922	49.0196078
1758	73.3333333	44.3137255	90.9803922	49.0196078
1759	90.9803922	44.3137255	90.9803922	49.0196078
1760	100	44.3137255	90.9803922	49.0196078
1761	0	90.9803922	90.9803922	49.0196078
1762	16.4705882	90.9803922	90.9803922	49.0196078
1763	44.3137255	90.9803922	90.9803922	49.0196078
1764	73.3333333	90.9803922	90.9803922	49.0196078
1765	90.9803922	90.9803922	90.9803922	49.0196078
1766	100	90.9803922	90.9803922	49.0196078
1767	100	0	34.1176471	100
1768	0	34.1176471	34.1176471	100
1769	34.1176471	34.1176471	34.1176471	100
1770	80.7843137	34.1176471	34.1176471	100
1771	100	34.1176471	34.1176471	100
1772	0	80.7843137	34.1176471	100
1773	34.1176471	80.7843137	34.1176471	100
1774	80.7843137	80.7843137	34.1176471	100
1775	100	80.7843137	34.1176471	100

1776	0	100	34.1176471	100
1777	34.1176471	100	34.1176471	100
1778	80.7843137	100	34.1176471	100
1779	100	100	34.1176471	100
1780	0	100	80.7843137	10.9803922
1781	12.9411765	100	80.7843137	10.9803922
1782	34.1176471	100	80.7843137	10.9803922
1783	60	100	80.7843137	10.9803922
1784	80.7843137	100	80.7843137	10.9803922
1785	92.9411765	100	80.7843137	10.9803922
1786	100	100	80.7843137	10.9803922
1787	0	0	100	49.0196078
1788	16.4705882	0	100	49.0196078
1789	44.3137255	0	100	49.0196078
1790	73.3333333	0	100	49.0196078
1791	90.9803922	0	100	49.0196078
1792	100	0	100	49.0196078
1793	0	44.3137255	100	49.0196078
1794	16.4705882	44.3137255	100	49.0196078
1795	44.3137255	44.3137255	100	49.0196078
1796	73.3333333	44.3137255	100	49.0196078
1797	90.9803922	44.3137255	100	49.0196078
1798	100	44.3137255	100	49.0196078
1799	0	90.9803922	100	49.0196078
1800	16.4705882	90.9803922	100	49.0196078
1801	44.3137255	90.9803922	100	49.0196078
1802	73.3333333	90.9803922	100	49.0196078
1803	90.9803922	90.9803922	100	49.0196078
1804	100	90.9803922	100	49.0196078
1805	100	0	80.7843137	100
1806	0	34.1176471	80.7843137	100
1807	34.1176471	34.1176471	80.7843137	100
1808	80.7843137	34.1176471	80.7843137	100
1809	100	34.1176471	80.7843137	100
1810	0	80.7843137	80.7843137	100
1811	34.1176471	80.7843137	80.7843137	100
1812	80.7843137	80.7843137	80.7843137	100
1813	100	80.7843137	80.7843137	100
1814	0	100	80.7843137	100
1815	34.1176471	100	80.7843137	100
1816	80.7843137	100	80.7843137	100
1817	100	100	80.7843137	100
1818	0	100	92.9411765	10.9803922
1819	12.9411765	100	92.9411765	10.9803922
1820	34.1176471	100	92.9411765	10.9803922
1821	60	100	92.9411765	10.9803922
1822	80.7843137	100	92.9411765	10.9803922
1823	92.9411765	100	92.9411765	10.9803922
1824	100	100	92.9411765	10.9803922
1825	0	16.4705882	0	49.0196078
1826	16.4705882	16.4705882	0	49.0196078
1827	44.3137255	16.4705882	0	49.0196078
1828	73.3333333	16.4705882	0	49.0196078
1829	90.9803922	16.4705882	0	49.0196078

1830	100	16.4705882	0	49.0196078
1831	0	73.3333333	0	49.0196078
1832	16.4705882	73.3333333	0	49.0196078
1833	44.3137255	73.3333333	0	49.0196078
1834	73.3333333	73.3333333	0	49.0196078
1835	90.9803922	73.3333333	0	49.0196078
1836	100	73.3333333	0	49.0196078
1837	0	100	0	49.0196078
1838	16.4705882	100	0	49.0196078
1839	44.3137255	100	0	49.0196078
1840	73.3333333	100	0	49.0196078
1841	90.9803922	100	0	49.0196078
1842	100	100	0	49.0196078
1843	100	0	100	100
1844	0	34.1176471	100	100
1845	34.1176471	34.1176471	100	100
1846	80.7843137	34.1176471	100	100
1847	100	34.1176471	100	100
1848	0	80.7843137	100	100
1849	34.1176471	80.7843137	100	100
1850	80.7843137	80.7843137	100	100
1851	100	80.7843137	100	100
1852	0	100	100	100
1853	34.1176471	100	100	100
1854	80.7843137	100	100	100
1855	100	100	100	100
1856	0	100	100	10.9803922
1857	12.9411765	100	100	10.9803922
1858	34.1176471	100	100	10.9803922
1859	60	100	100	10.9803922
1860	80.7843137	100	100	10.9803922
1861	92.9411765	100	100	10.9803922
1862	100	100	100	10.9803922
1863	0	16.4705882	16.4705882	49.0196078
1864	16.4705882	16.4705882	16.4705882	49.0196078
1865	44.3137255	16.4705882	16.4705882	49.0196078
1866	73.3333333	16.4705882	16.4705882	49.0196078
1867	90.9803922	16.4705882	16.4705882	49.0196078
1868	100	16.4705882	16.4705882	49.0196078
1869	0	73.3333333	16.4705882	49.0196078
1870	16.4705882	73.3333333	16.4705882	49.0196078
1871	44.3137255	73.3333333	16.4705882	49.0196078
1872	73.3333333	73.3333333	16.4705882	49.0196078
1873	90.9803922	73.3333333	16.4705882	49.0196078
1874	100	73.3333333	16.4705882	49.0196078
1875	0	100	16.4705882	49.0196078
1876	16.4705882	100	16.4705882	49.0196078
1877	44.3137255	100	16.4705882	49.0196078
1878	73.3333333	100	16.4705882	49.0196078
1879	90.9803922	100	16.4705882	49.0196078
1880	100	100	16.4705882	49.0196078
1881	0	22.3529412	0	85.0980392
1882	22.3529412	22.3529412	0	85.0980392
1883	60	22.3529412	0	85.0980392

1884	87.8431373	22.3529412	0	85.0980392
1885	100	22.3529412	0	85.0980392
1886	0	60	0	85.0980392
1887	22.3529412	60	0	85.0980392
1888	60	60	0	85.0980392
1889	87.8431373	60	0	85.0980392
1890	100	60	0	85.0980392
1891	0	87.8431373	0	85.0980392
1892	22.3529412	87.8431373	0	85.0980392
1893	60	87.8431373	0	85.0980392
1894	87.8431373	87.8431373	0	85.0980392
1895	100	87.8431373	0	85.0980392
1896	0	100	0	85.0980392
1897	22.3529412	100	0	85.0980392
1898	60	100	0	85.0980392
1899	87.8431373	100	0	85.0980392
1900	100	100	0	85.0980392
1901	0	16.4705882	44.3137255	49.0196078
1902	16.4705882	16.4705882	44.3137255	49.0196078
1903	44.3137255	16.4705882	44.3137255	49.0196078
1904	73.3333333	16.4705882	44.3137255	49.0196078
1905	90.9803922	16.4705882	44.3137255	49.0196078
1906	100	16.4705882	44.3137255	49.0196078
1907	0	73.3333333	44.3137255	49.0196078
1908	16.4705882	73.3333333	44.3137255	49.0196078
1909	44.3137255	73.3333333	44.3137255	49.0196078
1910	73.3333333	73.3333333	44.3137255	49.0196078
1911	90.9803922	73.3333333	44.3137255	49.0196078
1912	100	73.3333333	44.3137255	49.0196078
1913	0	100	44.3137255	49.0196078
1914	16.4705882	100	44.3137255	49.0196078
1915	44.3137255	100	44.3137255	49.0196078
1916	73.3333333	100	44.3137255	49.0196078
1917	90.9803922	100	44.3137255	49.0196078
1918	100	100	44.3137255	49.0196078
1919	0	22.3529412	22.3529412	85.0980392
1920	22.3529412	22.3529412	22.3529412	85.0980392
1921	60	22.3529412	22.3529412	85.0980392
1922	87.8431373	22.3529412	22.3529412	85.0980392
1923	100	22.3529412	22.3529412	85.0980392
1924	0	60	22.3529412	85.0980392
1925	22.3529412	60	22.3529412	85.0980392
1926	60	60	22.3529412	85.0980392
1927	87.8431373	60	22.3529412	85.0980392
1928	100	60	22.3529412	85.0980392
1929	0	87.8431373	22.3529412	85.0980392
1930	22.3529412	87.8431373	22.3529412	85.0980392
1931	60	87.8431373	22.3529412	85.0980392
1932	87.8431373	87.8431373	22.3529412	85.0980392
1933	100	87.8431373	22.3529412	85.0980392
1934	0	100	22.3529412	85.0980392
1935	22.3529412	100	22.3529412	85.0980392
1936	60	100	22.3529412	85.0980392
1937	87.8431373	100	22.3529412	85.0980392

1938	100	100	22.3529412	85.0980392
1939	0	16.4705882	73.3333333	49.0196078
1940	16.4705882	16.4705882	73.3333333	49.0196078
1941	44.3137255	16.4705882	73.3333333	49.0196078
1942	73.3333333	16.4705882	73.3333333	49.0196078
1943	90.9803922	16.4705882	73.3333333	49.0196078
1944	100	16.4705882	73.3333333	49.0196078
1945	0	73.3333333	73.3333333	49.0196078
1946	16.4705882	73.3333333	73.3333333	49.0196078
1947	44.3137255	73.3333333	73.3333333	49.0196078
1948	73.3333333	73.3333333	73.3333333	49.0196078
1949	90.9803922	73.3333333	73.3333333	49.0196078
1950	100	73.3333333	73.3333333	49.0196078
1951	0	100	73.3333333	49.0196078
1952	16.4705882	100	73.3333333	49.0196078
1953	44.3137255	100	73.3333333	49.0196078
1954	73.3333333	100	73.3333333	49.0196078
1955	90.9803922	100	73.3333333	49.0196078
1956	100	100	73.3333333	49.0196078
1957	0	22.3529412	60	85.0980392
1958	22.3529412	22.3529412	60	85.0980392
1959	60	22.3529412	60	85.0980392
1960	87.8431373	22.3529412	60	85.0980392
1961	100	22.3529412	60	85.0980392
1962	0	60	60	85.0980392
1963	22.3529412	60	60	85.0980392
1964	60	60	60	85.0980392
1965	87.8431373	60	60	85.0980392
1966	100	60	60	85.0980392
1967	0	87.8431373	60	85.0980392
1968	22.3529412	87.8431373	60	85.0980392
1969	60	87.8431373	60	85.0980392
1970	87.8431373	87.8431373	60	85.0980392
1971	100	87.8431373	60	85.0980392
1972	0	100	60	85.0980392
1973	22.3529412	100	60	85.0980392
1974	60	100	60	85.0980392
1975	87.8431373	100	60	85.0980392
1976	100	100	60	85.0980392
1977	0	16.4705882	90.9803922	49.0196078
1978	16.4705882	16.4705882	90.9803922	49.0196078
1979	44.3137255	16.4705882	90.9803922	49.0196078
1980	73.3333333	16.4705882	90.9803922	49.0196078
1981	90.9803922	16.4705882	90.9803922	49.0196078
1982	100	16.4705882	90.9803922	49.0196078
1983	0	73.3333333	90.9803922	49.0196078
1984	16.4705882	73.3333333	90.9803922	49.0196078
1985	44.3137255	73.3333333	90.9803922	49.0196078
1986	73.3333333	73.3333333	90.9803922	49.0196078
1987	90.9803922	73.3333333	90.9803922	49.0196078
1988	100	73.3333333	90.9803922	49.0196078
1989	0	100	90.9803922	49.0196078
1990	16.4705882	100	90.9803922	49.0196078
1991	44.3137255	100	90.9803922	49.0196078

1992	73.3333333	100	90.9803922	49.0196078
1993	90.9803922	100	90.9803922	49.0196078
1994	100	100	90.9803922	49.0196078
1995	0	22.3529412	87.8431373	85.0980392
1996	22.3529412	22.3529412	87.8431373	85.0980392
1997	60	22.3529412	87.8431373	85.0980392
1998	87.8431373	22.3529412	87.8431373	85.0980392
1999	100	22.3529412	87.8431373	85.0980392
2000	0	60	87.8431373	85.0980392
2001	22.3529412	60	87.8431373	85.0980392
2002	60	60	87.8431373	85.0980392
2003	87.8431373	60	87.8431373	85.0980392
2004	100	60	87.8431373	85.0980392
2005	0	87.8431373	87.8431373	85.0980392
2006	22.3529412	87.8431373	87.8431373	85.0980392
2007	60	87.8431373	87.8431373	85.0980392
2008	87.8431373	87.8431373	87.8431373	85.0980392
2009	100	87.8431373	87.8431373	85.0980392
2010	0	100	87.8431373	85.0980392
2011	22.3529412	100	87.8431373	85.0980392
2012	60	100	87.8431373	85.0980392
2013	87.8431373	100	87.8431373	85.0980392
2014	100	100	87.8431373	85.0980392
2015	0	16.4705882	100	49.0196078
2016	16.4705882	16.4705882	100	49.0196078
2017	44.3137255	16.4705882	100	49.0196078
2018	73.3333333	16.4705882	100	49.0196078
2019	90.9803922	16.4705882	100	49.0196078
2020	100	16.4705882	100	49.0196078
2021	0	73.3333333	100	49.0196078
2022	16.4705882	73.3333333	100	49.0196078
2023	44.3137255	73.3333333	100	49.0196078
2024	73.3333333	73.3333333	100	49.0196078
2025	90.9803922	73.3333333	100	49.0196078
2026	100	73.3333333	100	49.0196078
2027	0	100	100	49.0196078
2028	16.4705882	100	100	49.0196078
2029	44.3137255	100	100	49.0196078
2030	73.3333333	100	100	49.0196078
2031	90.9803922	100	100	49.0196078
2032	100	100	100	49.0196078
2033	0	22.3529412	100	85.0980392
2034	22.3529412	22.3529412	100	85.0980392
2035	60	22.3529412	100	85.0980392
2036	87.8431373	22.3529412	100	85.0980392
2037	100	22.3529412	100	85.0980392
2038	0	60	100	85.0980392
2039	22.3529412	60	100	85.0980392
2040	60	60	100	85.0980392
2041	87.8431373	60	100	85.0980392
2042	100	60	100	85.0980392
2043	0	87.8431373	100	85.0980392
2044	22.3529412	87.8431373	100	85.0980392
2045	60	87.8431373	100	85.0980392

2046	87.8431373	87.8431373	100	85.0980392
2047	100	87.8431373	100	85.0980392
2048	0	100	100	85.0980392
2049	22.3529412	100	100	85.0980392
2050	60	100	100	85.0980392
2051	87.8431373	100	100	85.0980392
2052	100	100	100	85.0980392